

APP CRS <b>180°</b>	Rwy Idg	<b>9320</b>
	TDZE	<b>295</b>
	Apt Elev	<b>341</b>

RNAV (RNP) Y RWY 18R

MEMPHIS INTL (MEM)

▼

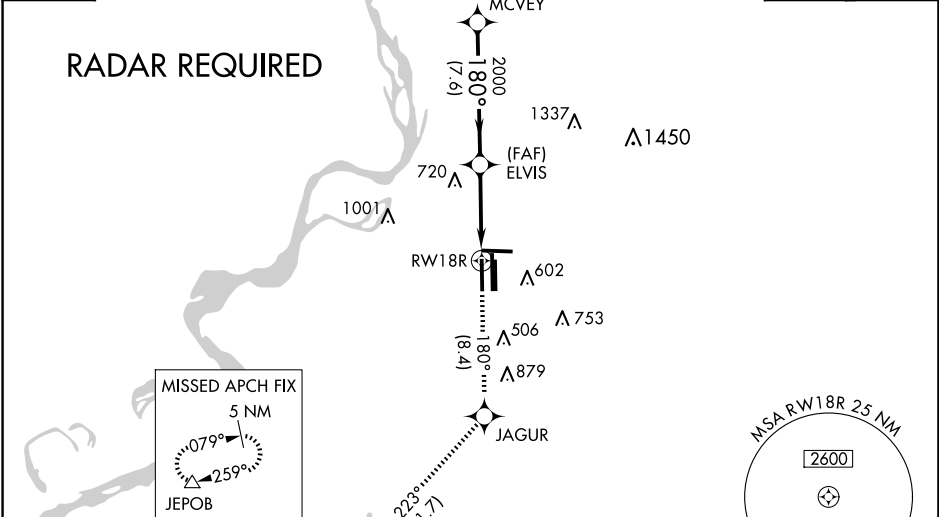
For uncompensated Baro-VNAV systems, procedure NA below -9°C (16°F) or above 48°C (118°F). Simultaneous approach authorized. GPS required. Use of FD or AP required during simultaneous operations. For inop ALS, increase RNP 0.19\* all Cats visibility to RVR 6000 and RNP 0.30 all Cats visibility to 1¾ SM.

MALSR

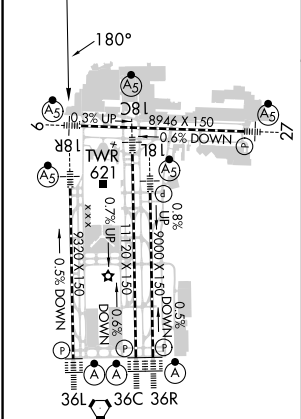
MISSED APPROACH: Climb to 5000 on track 180° to JAGUR and on track 223° to JEPOB and hold. \*Missed approach requires minimum climb of 425 feet per NM to 1000.

MEMPHIS APP CON		MEMPHIS TOWER		GND CON	
<b>119.1</b>	<b>291.6</b>	(Rwy 9-27)	<b>118.3 257.8</b>	(Rwy 9-27)	<b>121.0 379.2</b>
	(176°-355°)	(Rwys 18C-36C, 18L-36R)	<b>119.7 257.8</b>	(Rwys 18C-36C, 18L-36R)	<b>121.9 379.2</b>
<b>125.8</b>	<b>338.3</b>	(Rwy 18R-36L)	<b>128.425 257.8</b>	(Rwy 18R-36L)	<b>121.65 379.2</b>
	(356°-175°)				

D-ATIS <b>127.75</b>	CNLC DEL <b>125.2</b>	CPDLC
-------------------------	--------------------------	-------



ELEV <b>341</b>	<b>D</b>	TDZE <b>295</b>
-----------------	----------	-----------------



TDZ/CL Rwys 18L, 18C, 18R, 36R, 36C, and 36L  
HIRL all Rwys

5000	↑	tr 180°	JAGUR	tr 223°	JEPOB
CATEGORY		A	B	C	D
RNP 0.19 DA *			645/40	350 (400-¾)	
RNP 0.30 DA			771/60	476 (500-1¼)	

AUTHORIZATION REQUIRED