

APP CRS
180°

Rwy Idg
TDZE
Apt Elev

9320
295
341

RNAV (RNP) X RWY 18R

MEMPHIS INTL (MEM)

▼

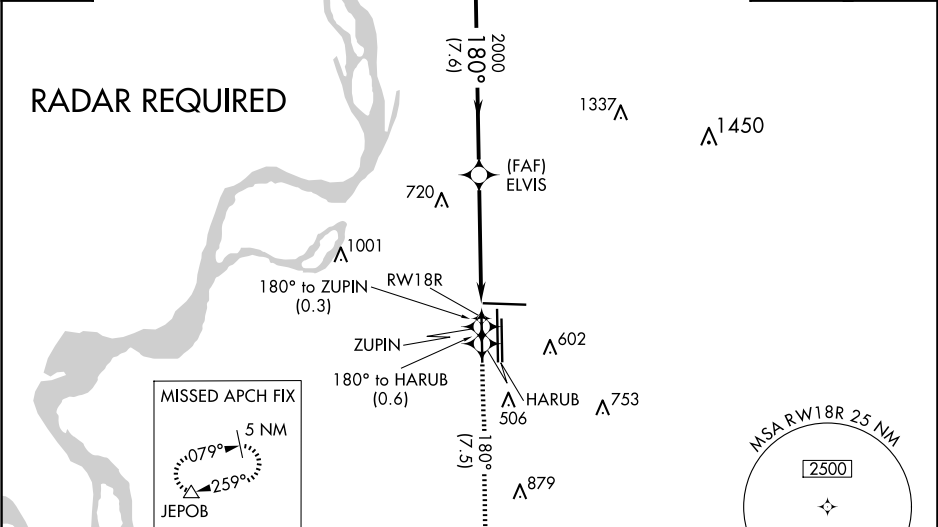
For uncompensated Baro-VNAV systems, procedure NA below -9°C (16°F) or above 48°C (118°F). Simultaneous approach authorized. GPS required. Missed approach requires RNP less than 1.0. Use of FD or AP required during simultaneous operations.

MALSR

MISSED APPROACH: Climb to 5000 on track 180° to ZUPIN and on track 180° to HARUB and on track 223° to JEPOB and hold.

MEMPHIS APP CON			MEMPHIS TOWER			GND CON		
119.1	291.6	(176°-355°)	(Rwy 9-27)	118.3	257.8	(Rwy 9-27)	121.0	379.2
125.8	338.3	(356°-175°)	(Rwys 18C-36C, 18L-36R)	119.7	257.8	(Rwys 18C-36C, 18L-36R)	121.9	379.2
			(Rwy 18R-36L)	128.425	257.8	(Rwy 18R-36L)	121.65	379.2

D-ATIS 127.75	CLNC DEL 125.2	CPDLC
------------------	-------------------	-------



ELEV 341

TDZE 295

180°

5000

tr 180°

ZUPIN

tr 180°

HARUB

tr 180°

JAGUR

tr 223°

JEPOB

MCVEY

ELVIS

2000

180°

4400

GP 3.00°

TCH 52

CATEGORY

A

B

C

D

RNP 0.14 DA

737/45

442 (400-7%)

AUTHORIZATION REQUIRED