

| | | |
|---------|----------|------|
| APP CRS | Rwy Idg | 9000 |
| 180° | TDZE | 301 |
| | Apt Elev | 341 |

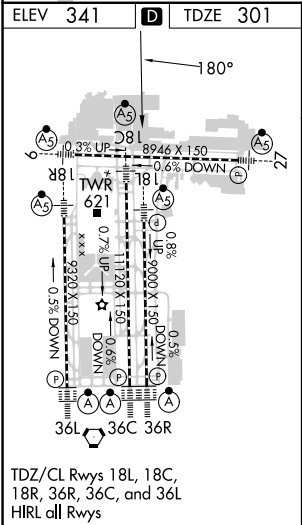
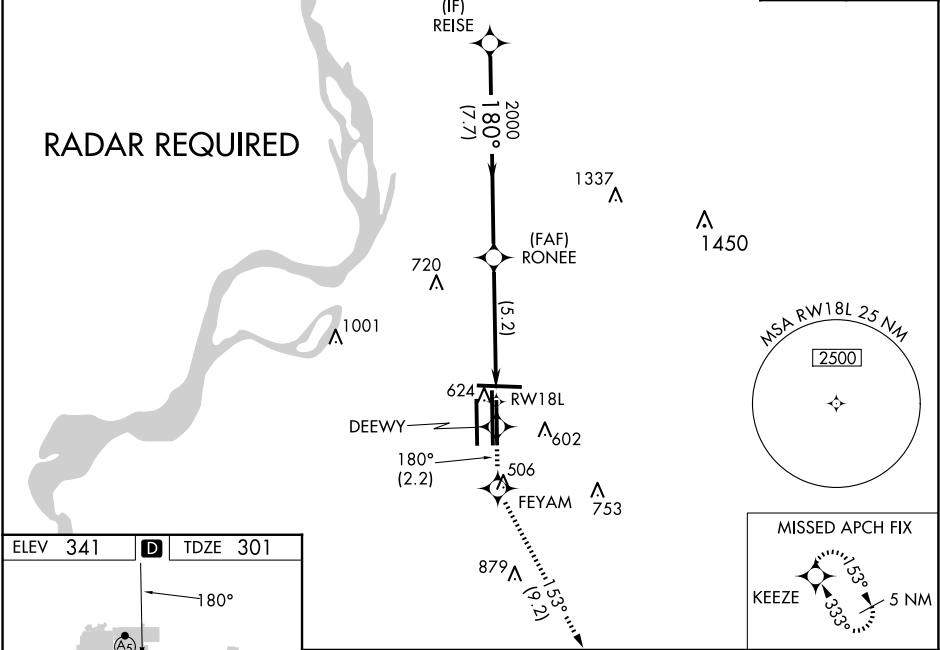
RNAV (RNP) X RWY 18L

MEMPHIS INTL (MEM)

| | | |
|---|--|---|
| <div><div>▼</div><div>For uncompensated Baro-VNAV systems, LNAV/VNAV NA below -9°C (16°F) or above 48°C (118 °F). Simultaneous approach authorized. GPS required. Missed approach requires RNP less than 1.0. For inop ALS increase RNP 0.11 all Cats visibility to RVR 6000.</div></div> | <div><div>MALSR</div><div><div><div>AS</div><div><div></div><div></div><div></div></div></div></div></div> | <div><div>MISSED APPROACH:</div><div>Climb to 5000 on track 180° to DEEWY and on track 180° to FEYAM left turn on track 153° to KEEZE and hold, continue climb-in-hold to 5000.</div></div> |
|---|--|---|

| | | |
|-------------------------|-------------------------------------|-------------------------------------|
| MEMPHIS APP CON | MEMPHIS TOWER | GND CON |
| 119.1 291.6 (176°-355°) | (Rwy 9-27) 118.3 257.8 | (Rwy 9-27) 121.0 379.2 |
| 125.8 338.3 (356°-175°) | (Rwys 18C-36C, 18L-36R) 119.7 257.8 | (Rwys 18C-36C, 18L-36R) 121.9 379.2 |
| | (Rwy 18R-36L) 128.425 257.8 | (Rwy 18R-36L) 121.65 379.2 |

| | | |
|--------|----------|-------|
| D-ATIS | CLNC DEL | CPDLC |
| 127.75 | 125.2 | |



| | | | | | |
|--|--------------------|------------|--------------|-----------------------|------------|
| 5000 ↑ | tr 180° ✧ | DEEWY ✧ | tr 180° ✧ | FEYAM tr 153° ↘ | KEEZE ✧ |
| VGSI and RNAV glidepath not coincident (VGSI Angle 3.00/TCH 73). | | | | | |
| <div><div><div>RW18L</div><div>2000</div><div>180°</div><div>4400</div><div>2000</div><div>5.2 NM</div><div>7.7 NM</div><div>GP 3.00° TCH 60</div></div></div> | | | | | |
| CATEGORY | A | B | C | D | |
| RNP 0.11 DA | 647/40 346 (400-¾) | | | | |
| AUTHORIZATION REQUIRED | | | | | |