

WAAS	APP CRS	Rwy Idg	9000
CH 49107	360°	TDZE	335
W36D		Apt Elev	341

RNAV (GPS) RWY 36R

MEMPHIS INTL (MEM)

▼

⚠

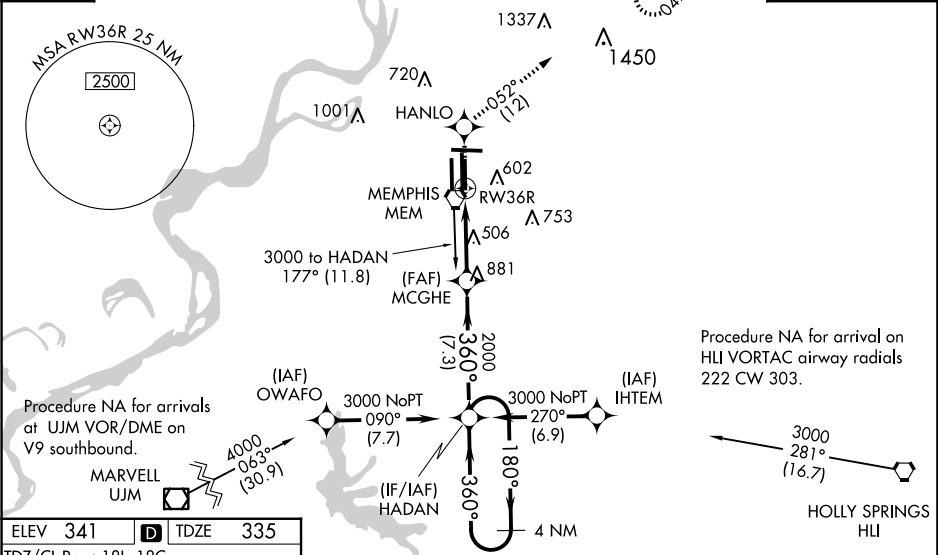
For uncompensated Baro-VNAV systems, LNAV/VNAV NA below -1.5°C (5°F) or above 48°C (118°F). Simultaneous approach authorized. DME/DME RNP-0.3 NA. LNAV procedure NA during simultaneous operations. Use of FD or AP required during simultaneous operations.

ALSF-2

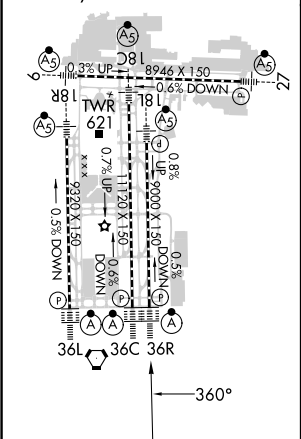
MISSED APPROACH: Climb to 5000 direct HANLO and on 052° track to OROCU and hold, continue climb-in-hold to 5000.

MEMPHIS APP CON		MEMPHIS TOWER		GND CON	
119.1	291.6	(Rwy 9-27)	118.3 257.8	(Rwy 9-27)	121.0 379.2
	(176°-355°)	(Rwys 18C-36C, 18L-36R)	119.7 257.8	(Rwys 18C-36C, 18L-36R)	121.9 379.2
125.8	338.3	(Rwy 18R-36L)	128.425 257.8	(Rwy 18R-36L)	121.65 379.2
	(356°-175°)				

D-ATIS	CLNC DEL	CPDLC
127.75	125.2	



ELEV 341	D	TDZE 335
TDZ/CL Rwys 18L, 18C, 18R, 36R, 36C, and 36L		
HIRL all Rwys		



5000	HANLO	tr 052°	OROCU	VGSI and RNAV glidepath not coincident (VGSI Angle 3.00/TCH 69).	4 NM
				HADAN	Holding Pattern
*LNAV only.					
*1.2 NM to RW36R					
RW36R					
MCGHE					
2000					
180°→ 3000					
← 360°					
GP 3.00° TCH 58					
1.2 NM 3.8 NM 7.3 NM					
CATEGORY	A	B	C	D	
LPV DA	639/24 304 (300-½)				
LNAV/VNAV DA	763/50 428 (500-1)				
LNAV MDA	760/24	425 (500-½)	760/40	760/50	
			425 (500-¾)	425 (500-1)	
CIRCLING	940-1	599 (600-1)	940-1½	1020-2¼	
			599 (600-1½)	679 (700-2¼)	