

WAAS CH 65907 W36A	APP CRS 360°	Rwy Idg TDZE Apt Elev	9320 321 341
--	------------------------	-----------------------------	---

RNAV (GPS) RWY 36L

MEMPHIS INTL(MEM)

⚠

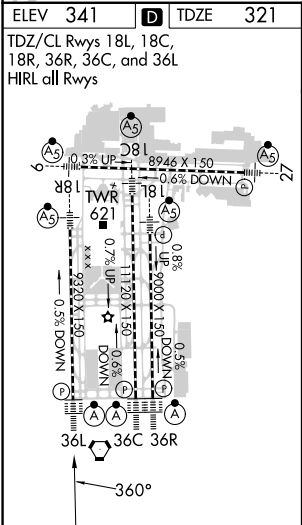
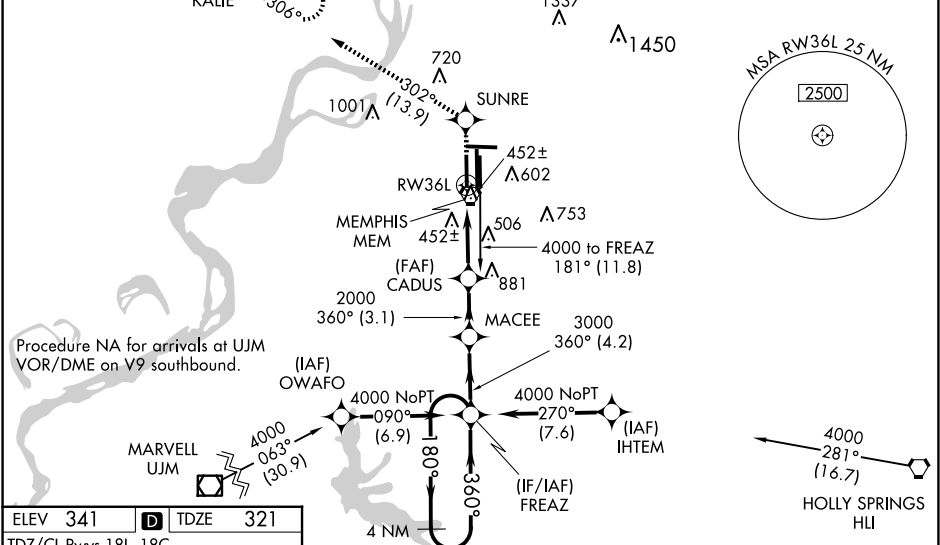
For uncompensated Baro-VNAV systems, LNAV/VNAV NA below -15°C (5°F) or above 48°C (118°F). Simultaneous approach authorized. DME/DME RNP-0.3 NA. LNAV procedure NA during simultaneous operations. Use of FD or AP required during simultaneous operations.

ALSF-2

MISSED APPROACH: Climb to 5000 direct SUNRE and on track 302° to KALIE and hold, continue climb-in-hold to 5000.

MEMPHIS APP CON		MEMPHIS TOWER	GND CON
119.1	291.6 (176°-355°)	(Rwy 9-27) 118.3 257.8	(Rwy 9-27) 121.0 379.2
125.8	338.3 (356°-175°)	(Rwys 18C-36C, 18L-36R) 119.7 257.8	(Rwys 18C-36C, 18L-36R) 121.9 379.2
		(Rwy 18R-36L) 128.425 257.8	(Rwy 18R-36L) 121.65 379.2

D-ATIS 127.75	CINC DEL 125.2	CPDLC
-------------------------	--------------------------	-------



5000	SUNRE	tr 302°	KALIE	FREA Z	4 NM Holding Pattern
*LNAV only.					
*1.2 NM to RW36L					
RW36L					
MACEE					
CADUS					
2000					
3000					
VGSi and RNAV glidepath not coincident (VGSi Angle 3.00/TCH 73).					
1.2					
3.8 NM					
3.1 NM					
4.2 NM					
CATEGORY	A				
LPV DA	673/40 352 (400-¾)				
LNAV/VNAV DA	760/50 439 (500-1)				
LNAV MDA	780/24 459 (500-½)				
CIRCLING	780/40 459 (500-¾)				
	780/50 459 (500-1)				
CIRCLING	940-1 599 (600-1)				
	940-1½ 599 (600-1½)				
CIRCLING	780/50 459 (500-1)				
	1020-2¼ 679 (700-2¼)				