

WAAS CH <b>40407</b> <b>W36B</b>	APP CRS <b>360°</b>	Rwy Idg TDZE <b>341</b> Apt Elev <b>341</b>	<b>10715</b>
--	------------------------	---	--------------

RNAV (GPS) RWY 36C  
MEMPHIS INTL (MEM)

**RNP APCH.**

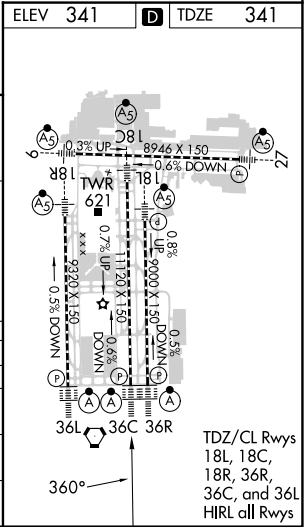
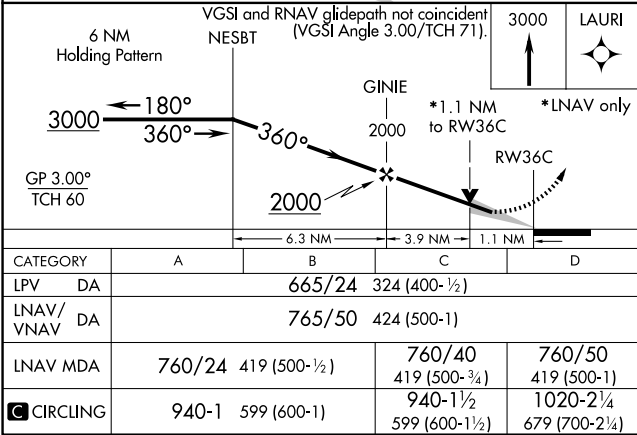
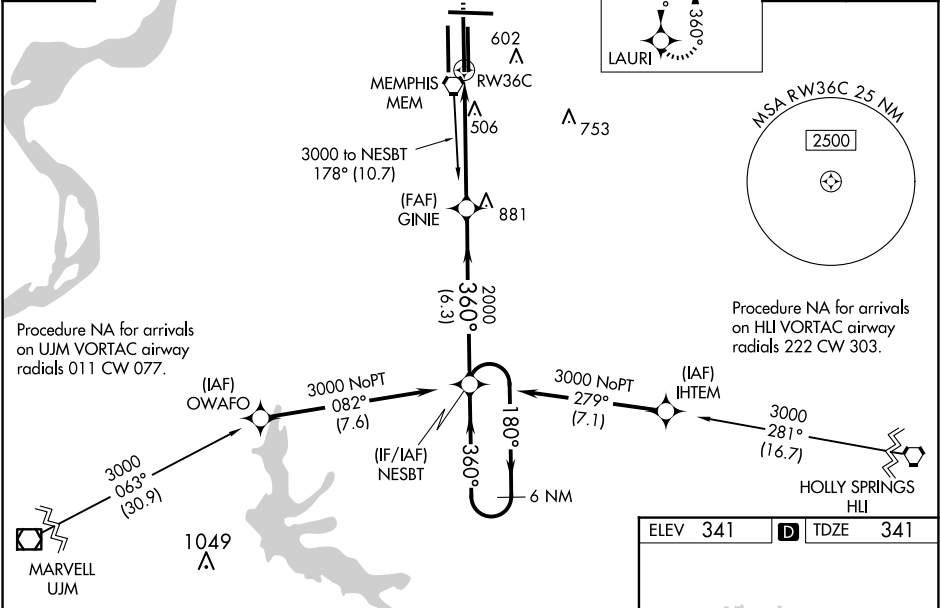
**⚠** For uncompensated Baro-VNAV systems, LNAV/VNAV NA below -15°C or above 54°C. Simultaneous approach authorized. For inop ALS increase LPV all Cats visibility to RVR 5000, increase LNAV Cat D visibility to RVR 6000. LNAV procedure NA during simultaneous operations. Use of FD or AP required during simultaneous operations.

**ALS-F-2**

**MISSED APPROACH:**  
Climb to 3000 direct LAURI and hold.

MEMPHIS APP CON <b>119.1 291.6</b> (176°-355°) <b>125.8 338.3</b> (356°-175°)	MEMPHIS TOWER (Rwy 9-27) <b>118.3 257.8</b> (Rwys 18C-36C, 18L-36R) <b>119.7 257.8</b> (Rwy 18R-36L) <b>128.425 257.8</b>	GND CON (Rwy 9-27) <b>121.0 379.2</b> (Rwys 18C-36C, 18L-36R) <b>121.9 379.2</b> (Rwy 18R-36L) <b>121.65 379.2</b>
---	--	---

D-ATIS <b>127.75</b>	<b>Λ 1001</b>	MISSED APCH FIX <b>LAURI</b> 180° 360° 4 NM	CLNC DEL <b>125.2</b>	CPDLC
-------------------------	---------------	---	--------------------------	-------



SE-1, 07 AUG 2025 to 04 SEP 2025

SE-1, 07 AUG 2025 to 04 SEP 2025