

MEMPHIS, TENNESSEE

AL-253 (FAA)

25107

WAAS CH 93607 W27A	APP CRS 273°	Rwy Idg TDZE Apt Elev	8946 292 341
--	------------------------	-----------------------------	---

RNAV (GPS) RWY 27
MEMPHIS INTL (MEM)

RNP APCH - GPS.

T For uncompensated Baro-VNAV systems, LNAV/VNAV NA below -9°C or above 54°C. For inop ALS, increase LNAV Cat C and D visibility to 1 3/8 SM.
A *RVR 1800 authorized with use of FD or AP or HUD to DA.

MALSR



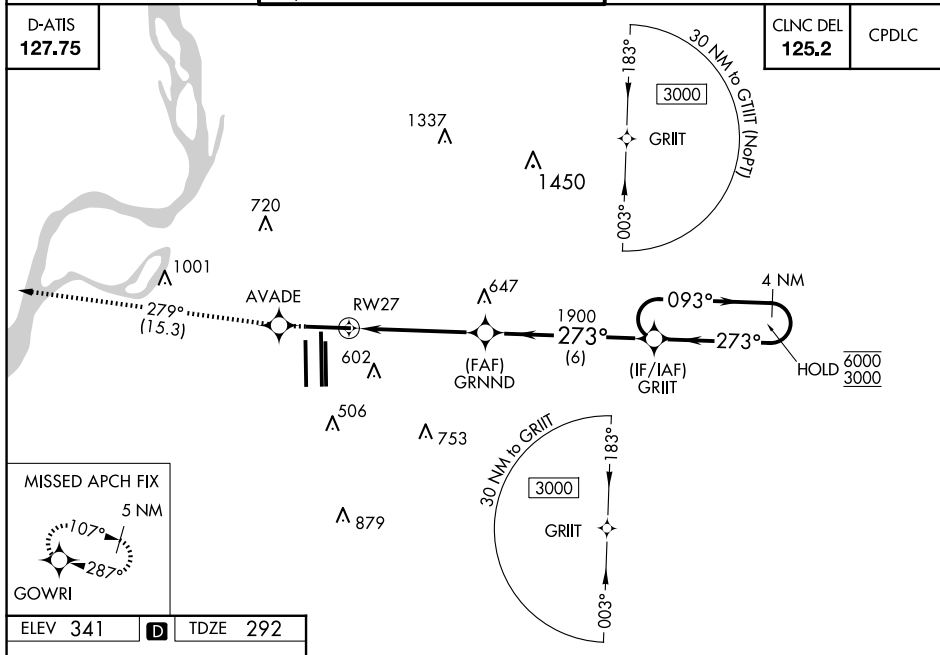
MISSED APPROACH: Climb to 5000 direct AVADE and on track 279° to GOWRI and hold, continue climb-in-hold to 5000.

MEMPHIS APP CON			MEMPHIS TOWER			GND CON		
119.1	291.6	(176°-355°)	(Rwy 9-27)	118.3	257.8	(Rwy 9-27)	121.0	379.2
125.8	338.3	(356°-175°)	(Rwys 18C-36C, 18L-36R)	119.7	257.8	(Rwys 18C-36C, 18L-36R)	121.9	379.2
			(Rwy 18R-36L)	128.425	257.8	(Rwy 18R-36L)	121.65	379.2

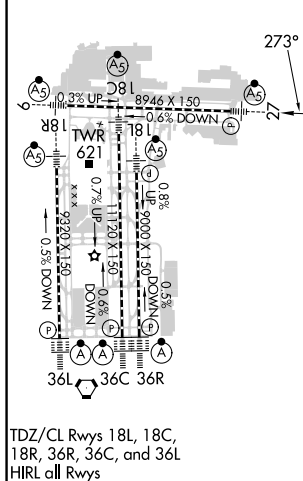
D-ATIS
127.75

CLNC DEL
125,2

CPDLC



ELEV 341	D	TDZE 292
----------	----------	----------



5000
↑

AVADE
✦

tr
279°

GOWRI
✦

VGSI and RNAV glidepath not coincident
(VGSI Angle 3.00/TCH 69).

4 NM
Holding Pattern

GRNND
1900

1.4 NM to RW27

1.4 NM

3.5 NM

6 NM

093° → 6000
← 273° 3000

GP 3.00°
TCH 54

CATEGORY	A	B	C	D
LPV DA *	492/24 200 (200-½)			
RNAV/ VNAV DA	745/50 453 (500-1)			
RNAV MDA	800/24 508 (500-½)	800/55 508 (500-1)		
C CIRCLING	940-1 599 (600-1)	940-1½ 599 (600-1½)	1020-2¼ 679 (700-2¼)	

MEMPHIS, TENNESEE
Amdt 2E 30NOV23

35°03'N-89°59'W

MEMPHIS INTL (MEM)
RNAV (GPS) RWY 27

SE-1, 07 AUG 2025 to 04 SEP 2025