

MARVELL SIX ARRIVAL

AL-253 (FAA)

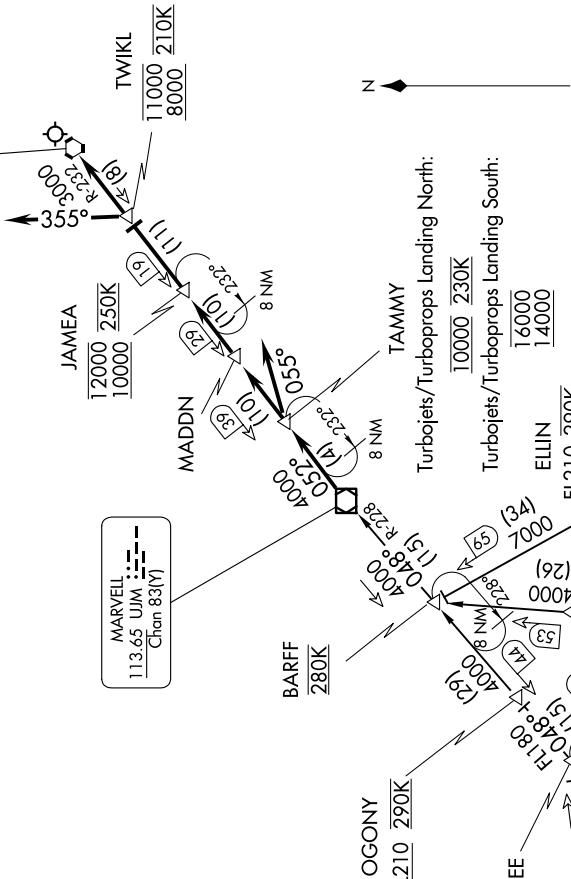
MEMPHIS INTL (MEM)
MEMPHIS, TENNESSEE

SE-1, 07 AUG 2025 to 04 SEP 2025

(NARRATIVE ON FOLLOWING PAGE)

MEMPHIS APP CON
119.1 291.6 (176°-355°)
125.8 338.3 (356°-175°)
D-ATIS 127.75

- NOTE: DME and RADAR required.
- NOTE: Procedure not available for RNAV capable Turbojets.
- NOTE: RNAV capable Turbojets must file the HOBK RNAV STAR.
- NOTE: Maintain last assigned altitude until cleared to "descend via the MARVELL SIX," then comply with altitude restrictions as published.



NOTE: Chart not to scale

MARVELL SIX ARRIVAL
(UJM.UJM6) 10NOV16

MEMPHIS, TENNESSEE
MEMPHIS INTL (MEM)

SE-1, 07 AUG 2025 to 04 SEP 2025