

LOC I-MEM	APP CRS	Rwy Idg	8946
109.5	093°	TDZE	259
		Apt Elev	341

ILS or LOC RWY 9  
MEMPHIS INTL (MEM)

For inop ALS, increase S-ILS 9 Cat E visibility to RVR 4000 and S-LOC 9 Cat E visibility to 1¾ SM.



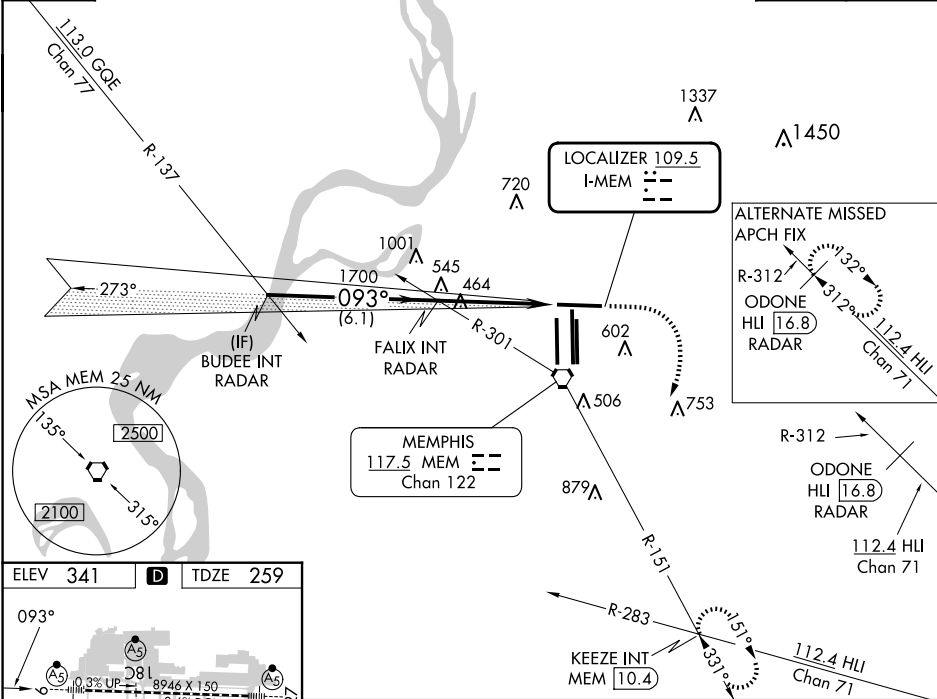
MISSED APPROACH: Climb to 1000 then climbing right turn to 5000 on MEM R-151 to KEEZE INT/MEM 10.4 DME and hold, continue climb-in-hold to 5000.

MEMPHIS APP CON		MEMPHIS TOWER		GND CON	
119.1	291.6	(Rwy 9-27)	118.3 257.8	(Rwy 9-27)	121.0 379.2
125.8	338.3	(Rwys 18C-36C, 18L-36R)	119.7 257.8	(Rwys 18C-36C, 18L-36R)	121.9 379.2
		(Rwy 18R-36L)	128.425 257.8	(Rwy 18R-36L)	121.65 379.2

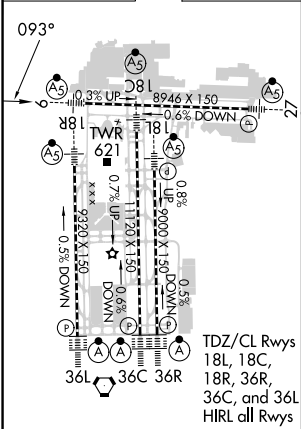
D-ATIS
127.75

RADAR REQUIRED

CLNC DEL	CPDLC
125.2	



ELEV 341	D	TDZE 259
----------	---	----------



FAF to MAP 4.3 NM					
Knots	60	90	120	150	180
Min:Sec	4:18	2:52	2:09	1:43	1:26

BUDEE INT RADAR	2000	093°	FALIX INT RADAR	1700		1000	5000	MEM R-151	KEEZE INT	
GS 3.00° TCH 52	6.1 NM		4.3 NM							
CATEGORY	A		B		C		D		E	
S-ILS 9	466/24 207 (200-½)									
S-LOC 9	720/24 461 (400-½)				720/50 461 (400-1)				720/60 461 (400-1½)	
CIRCLING	940-1 599 (600-1)				940-1½ 599 (600-1½)		1020-2¼ 679 (700-2¼)		1140-2¾ 799 (800-2¾)	