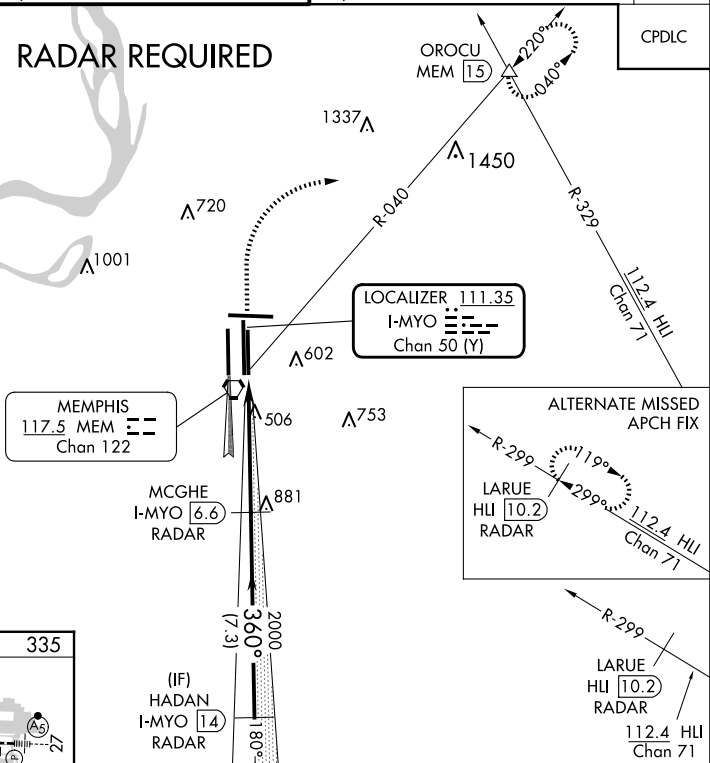
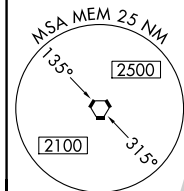


ILS or LOC RWY 36R  
MEMPHIS INTL (MEM)

MEMPHIS APP CON		MEMPHIS TOWER		GND CON		CLNC DEL
<b>119.1</b>	<b>291.6</b> (176°-355°)	(Rwy 9-27)	<b>118.3</b> <b>257.8</b>	(Rwy 9-27)	<b>121.0</b> <b>379.2</b>	
<b>125.8</b>	<b>338.3</b> (356°-175°)	(Rwys 18C-36C, 18L-36R)	<b>119.7</b> <b>257.8</b>	(Rwys 18C-36C, 18L-36R)	<b>121.9</b> <b>379.2</b>	
		(Rwy 18R-36L)	<b>128.425</b> <b>257.8</b>	(Rwy 18R-36L)	<b>121.65</b> <b>379.2</b>	

## RADAR REQUIRED

[illegible]

1000 ↑	5000 hdg 070°	MEM R-040	OROCU △	MCGHE I-MYO <u>6.6</u> RADAR 2000	HADAN I-MYO <u>14</u> RADAR 3000
CATEGORY	A		B	C	D
S-ILS 36R	535/18 200 (200-½)				535/24 200 (200-½)
S-LOC 36R	760/24 425 (500-½)		760/40 425 (500-¾)		760/50 425 (500-1)
<b>C</b> CIRCLING	940-1 599 (600-1)		940-1½ 599 (600-1½)	1020-2¼ 679 (700-2¼)	1140-2¾ 799 (800-2¾)

SE-1, 07 AUG 2025 to 04 SEP 2025