


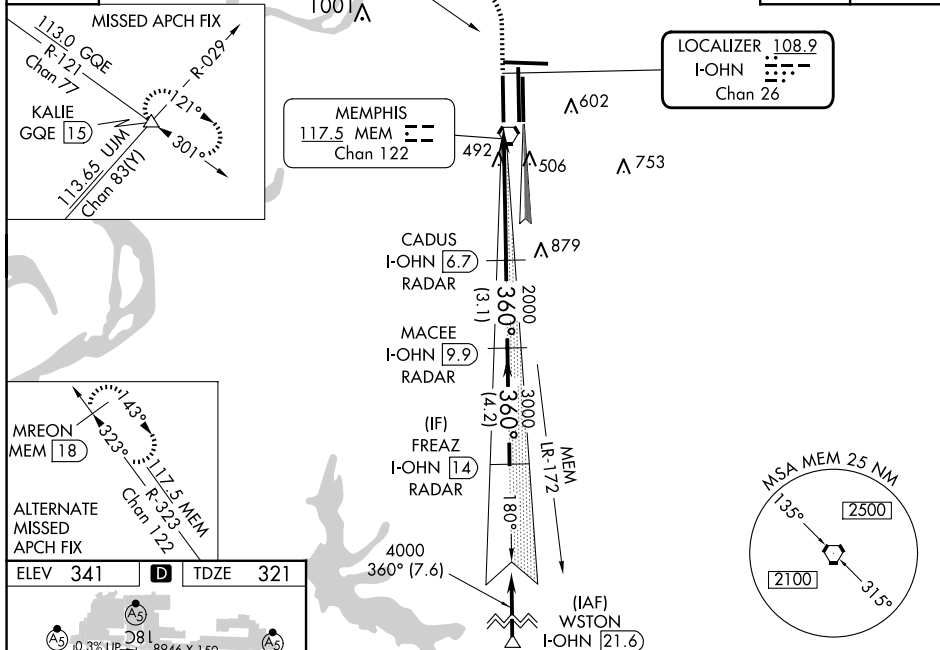
LOC/DME I-OHN 108.9 Chan 26	APP CRS 360°	Rwy Idg 9320 TDZE 321 Apt Elev 341
---	------------------------	---

ILS or LOC RWY 36L
MEMPHIS INTL (MEM)

- | | | |
|--|--|---|
| <p>T Simultaneous approach authorized with Rwy 36C/R. For inoperative ALSF, increase S-ILS 36L Cat E visibility to RVR 4000, and S-LOC 36L Cat E visibility to 1½. DME or RADAR required.</p> | <p>ALSF-2</p>  | <p>MISSED APPROACH: Climb to 1000 then climbing left turn to 5000 via heading 330° and GQE VOR/DME R-121 to KALIE INT/GQE 15 DME and hold, continue climb-in-hold to 5000.</p> |
|--|--|---|

MEMPHIS APP CON			MEMPHIS TOWER			GND CON		
119.1	291.6	(176°-355°)	(Rwy 9-27)	118.3	257.8	(Rwy 9-27)	121.0	379.2
			(Rwys 18C-36C, 18L-36R)	119.7	257.8	(Rwys 18C-36C, 18L-36R)	121.9	379.2
125.8	338.3	(356°-175°)	(Rwy 18R-36L)	128.425	257.8	(Rwy 18R-36L)	121.65	379.2

D-ATIS 127.75	113.0 GQE ==:- Chan 77	R-121	△720	CLNC DEL 125.2	CPDLC
-------------------------	---------------------------	-------	------	--------------------------	-------



S-LOC Approach Procedure Details:

- Runway Layout:** 36L (3600' x 150'), 36C, 36R, 18L, 18C, 18R, 36R, 36C, and 36L.
- Navigation Aids:** AS, TWR, A, P, and various frequency markers (e.g., 118.1, 118.2, 118.3).
- VGSIs:** VGSIs are provided for Runways 18L, 18C, 18R, 36C, and 36L.
- Altitude Restrictions:** 36L to 36C and 36R; 36C to 36R; 36R to 18L, 18C, 18R, 36C, and 36L.
- Glide Path:** 3.00° TCH 59'.
- I-OHN Points:** 1.7, 2.8, 6.7, 9.9.
- Distances:** 1.1 NM, 3.9 NM, 3.1 NM, 4.2 NM.