

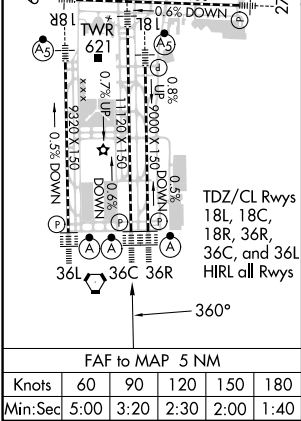
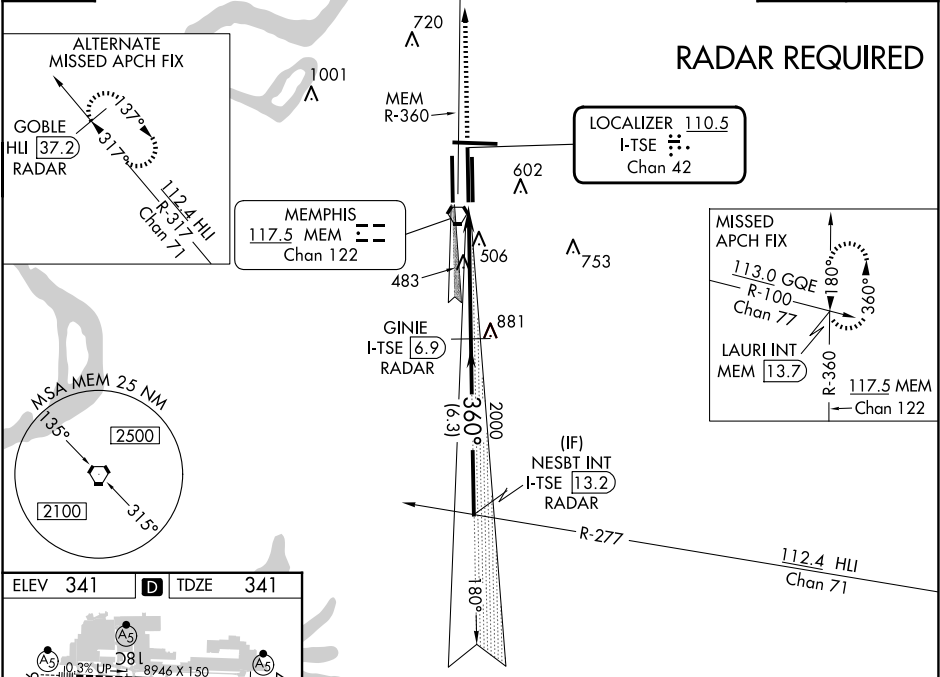
LOC/DME I-TSE	APP CRS	Rwy Idg	10715
110.5	360°	TDZE	341
Chan 42		Apt Elev	341

ILS or LOC RWY 36C
MEMPHIS INTL (MEM)

For inoperative ALS, increase S-ILS 36C Cat E visibility to RVR 4000 and S-LOC 36C Cat C/D/E visibility to RVR 6000. DME or RADAR required. Simultaneous approach authorized with Rwy 36L.	ALSF-2	MISSED APPROACH: Climb to 3000 via MEM VORTAC R-360 to LAURI INT/MEM 13.7 DME and hold.
--	--------	---

MEMPHIS APP CON	MEMPHIS TOWER	GND CON
119.1 291.6 (176°-355°)	(Rwy 9-27) 118.3 257.8	(Rwy 9-27) 121.0 379.2
125.8 338.3 (356°-175°)	(Rwys 18C-36C, 18L-36R) 119.7 257.8	(Rwys 18C-36C, 18L-36R) 121.9 379.2
	(Rwy 18R-36L) 128.425 257.8	(Rwy 18R-36L) 121.65 379.2

D-ATIS	CLNC DEL	CPDLC
127.75	125.2	



SE-1, 07 AUG 2025 to 04 SEP 2025

SE-1, 07 AUG 2025 to 04 SEP 2025