

ILS or LOC RWY 18L  
MEMPHIS INTL (MEM)

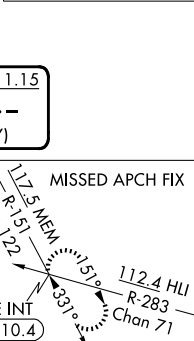
MEMPHIS APP CON			MEMPHIS TOWER			GND CON		
<b>119.1</b>	<b>291.6</b>	(176°-355°)	(Rwy 9-27)	<b>118.3</b>	<b>257.8</b>	(Rwy 9-27)	<b>121.0</b>	<b>379.2</b>
			(Rwys 18C-36C, 18L-36R)	<b>119.7</b>	<b>257.8</b>	(Rwys 18C-36C, 18L-36R)	<b>121.9</b>	<b>379.2</b>
<b>125.8</b>	<b>338.3</b>	(356°-175°)	(Rwy 18R-36L)	<b>128.425</b>	<b>257.8</b>	(Rwy 18R-36L)	<b>121.65</b>	<b>379.2</b>

ALTERNATE  
MISSED APCH FIX

119°  
299°

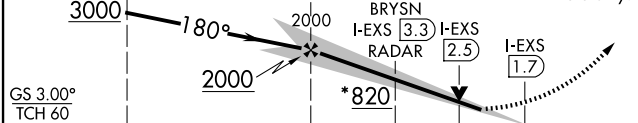
LARUE  
HLI 10.2  
RADAR

1124 HLI  
R-299  
Chan 71



## RADAR REQUIRED

VGSI and ILS glidepath not coincident (VGSI Angle 3.00/TCH 73).		900 	5000 	KEEZE INT
REISE I-EXS 14.5 RADAR	RONEE I-EXS 6.8 RADAR	*LOC only.		




	7.7 NM		3.5 NM	0.8 NM	0.9 NM	
CATEGORY	A	B	C	D	E	
S-ILS 18L	501/18 200 (200-½)				501/24 200 (200-½)	

S-LOC 18L	820/24 519 (500-½)	820/50 519 (500-1)	820/60 519 (500-1¼)
-----------	--------------------	-----------------------	---------------------

<b>C</b> CIRCLING	940-1	599 (600-1)	940-1½	1020-2¼	1140-2¾
			599 (600-1½)	679 (700-2¼)	799 (800-2¾)

BRYSN FIX MINIMUMS	
1	2
3	4
5	6
7	8
9	10
11	12
13	14
15	16
17	18
19	20
21	22
23	24
25	26
27	28
29	30
31	32
33	34
35	36
37	38
39	40
41	42
43	44
45	46
47	48
49	50
51	52
53	54
55	56
57	58
59	60
61	62
63	64
65	66
67	68
69	70
71	72
73	74
75	76
77	78
79	80
81	82
83	84
85	86
87	88
89	90
91	92
93	94
95	96
97	98
99	100

S-LOC 18L	620/24 319 (300- $\frac{1}{2}$ )	620/40 319 (300- $\frac{3}{4}$ )
-----------	----------------------------------	----------------------------------

 CIRCLING	940-1 599 (600-1)	940-1½ 599 (600-1½)	1020-2¼ 679 (700-2¼)	1140-2¾ 799 (800-2¾)
--	-------------------	------------------------	-------------------------	-------------------------

MEMPHIS INTL (MEM)

ILS or LOC RWY 18L

SE-1, 07 AUG 2025 to 04 SEP 2025