

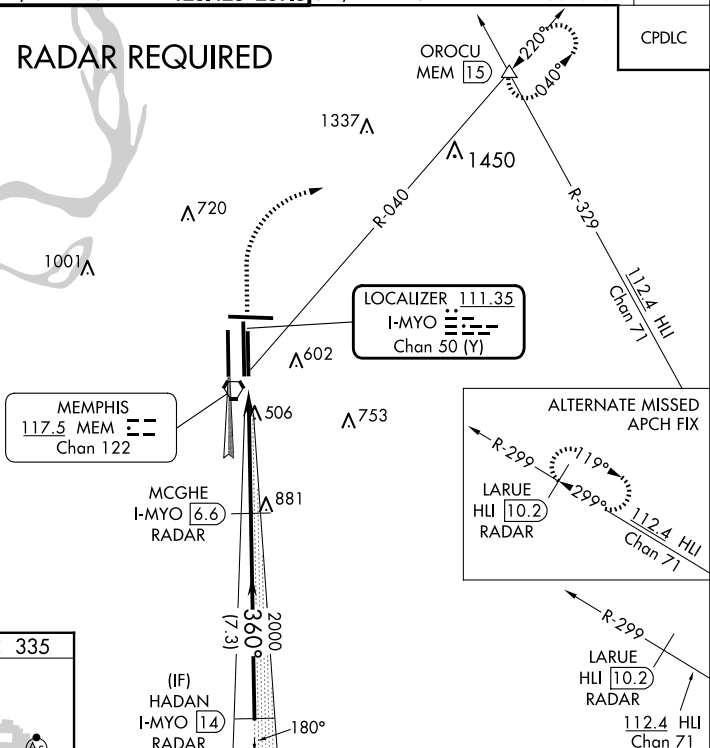
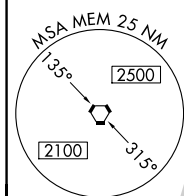
ILS RWY 36R (CAT II & III)
MEMPHIS INTL (MEM)

ALSF-2

MISSED APPROACH: Climb to 1000 then climbing right turn to 5000 via heading 070° and MEM VORTAC R-040 to OROCU INT/MEM VORTAC 15 DME and hold, continue climb-in-hold to 5000.

D-ATIS	127.75
--------	--------

RADAR REQUIRED



TDZ/CL Rwy 18L, 18C,
18R, 36R, 36C, and 36L
HIRL all Rwy

1000 ↑	5000 hdg 070°	MEM R-040	OROCU △	MCGHE I-MYO <u>6.6</u> RADAR 2000	HADAN I-MYO <u>14</u> RADAR 3000
CATEGORY	A	B	C	D	
S-ILS 36R	CAT II RA 109/12 100 DA 435				
S-ILS 36R	CAT IIIa		RVR07		
S-ILS 36R	CAT IIIb		RVR03		
S-ILS 36R	CAT IIIc		NA		

CATEGORY II & III ILS - SPECIAL AIRCREW
& AIRCRAFT CERTIFICATION REQUIRED