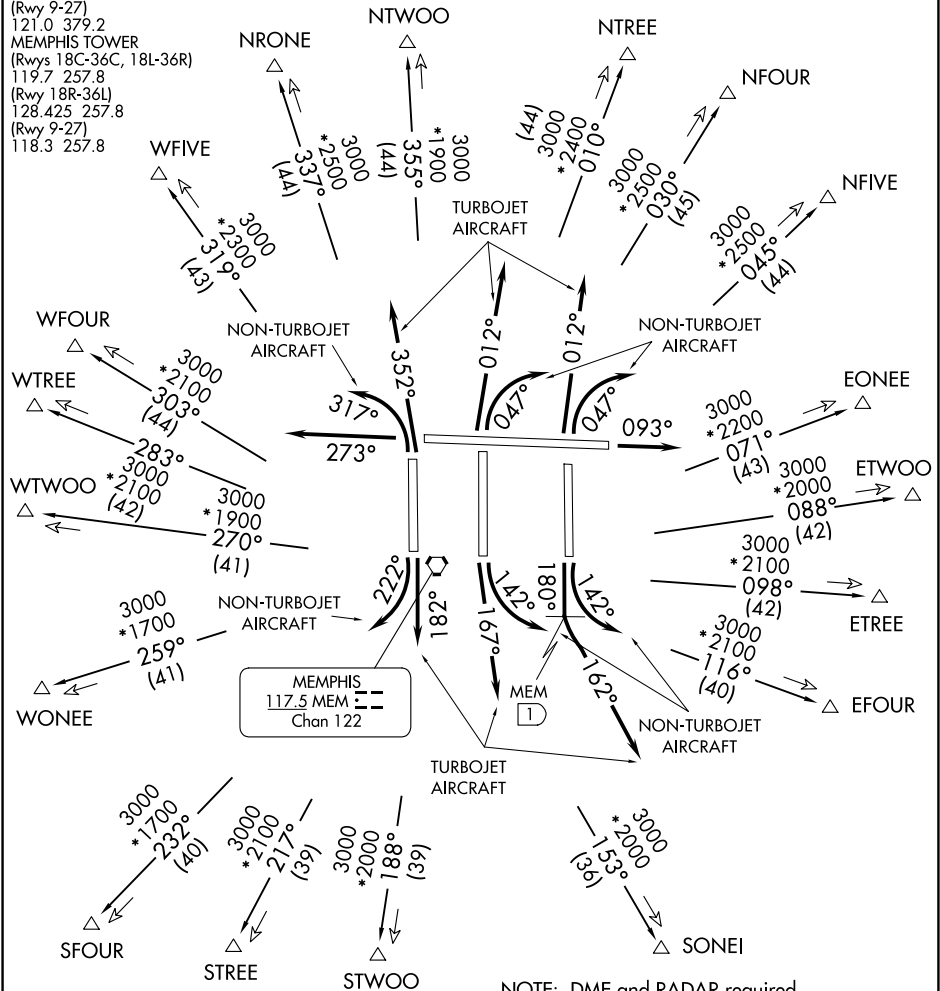


D-ATIS 127.75
CLNC DEL
125.2
CPDLC
GND CON
(Rwys 18C-36C, 18L-36R)
121.9 379.2
(Rwy 18R-36L)
121.65 379.2
(Rwy 9-27)
121.0 379.2
MEMPHIS TOWER
(Rwys 18C-36C, 18L-36R)
119.7 257.8
(Rwy 18R-36L)
128.425 257.8
(Rwy 9-27)
118.3 257.8

TOP ALTITUDE:
(JETS) 5000
(PROPS) 3000

MEMPHIS DEP CON
EONEE, ETWOO, ETREE, EFOUR
NTREE, NFOUR, NFIVE, SONEI
TRANSITIONS: 124.15 353.67
NRONE, NTWOO, STWOO, STREE
SFOUR, WONEE, WTWOO, WTREE,
WFOUR, WFIVE TRANSITIONS: 124.65 284.7



TAKEOFF MINIMUMS:
Rwys 9, 18C/R, 27, 36L/C/R: Standard.
Rwy 18L: Props: Standard; Turboprops: Standard
with minimum climb of 340' per NM to 800.
(NARRATIVE ON FOLLOWING PAGES)

NOTE: DME and RADAR required.
NOTE: Make no turns below 800 MSL.
NOTE: Turboprop aircraft accelerate to 250K
immediately until reaching 10000
MSL, if unable advise ATC.
NOTE: Transponder code will be issued
via PDC or Memphis clearance delivery.

NOTE: Chart not to scale.

SE-1, 07 AUG 2025 to 04 SEP 2025

SE-1, 07 AUG 2025 to 04 SEP 2025