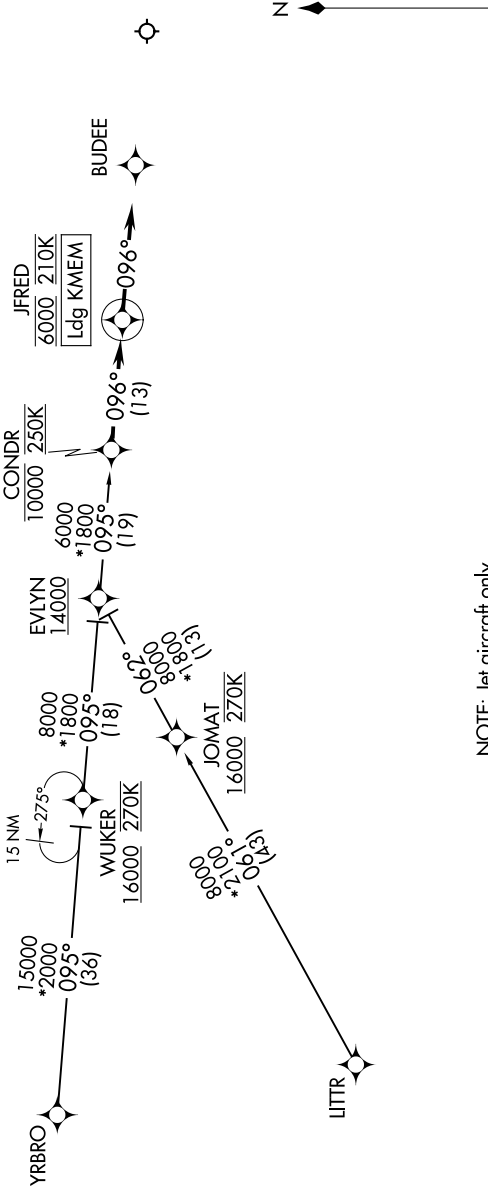


SE-1, 07 AUG 2025 to 04 SEP 2025

MEMPHIS APP CON  
119.1 291.6 (176°-355°)  
125.8 338.3 (356°-175°)  
D-ATIS  
127.75

RNAV 1 - DME/DME/IRU or GPS.  
RADAR required.

ARRIVAL ROUTE DESCRIPTION  
  
EVLYN TRANSITION (EVLYN.CONDR4):  
LITR TRANSITION (LITR.CONDR4):  
YRBRO TRANSITION (YRBRO.CONDR4):  
  
From CONDR on track 096° to cross JFRED at 6000 and at 210K, then on track 096°. Expect RADAR vectors to final approach course.



NOTE: Jet aircraft only.  
NOTE: Do not file - to be assigned by ATC.

NOTE: Chart not to scale.

SE-1, 07 AUG 2025 to 04 SEP 2025