

## CHLDR FIVE DEPARTURE (RNAV)

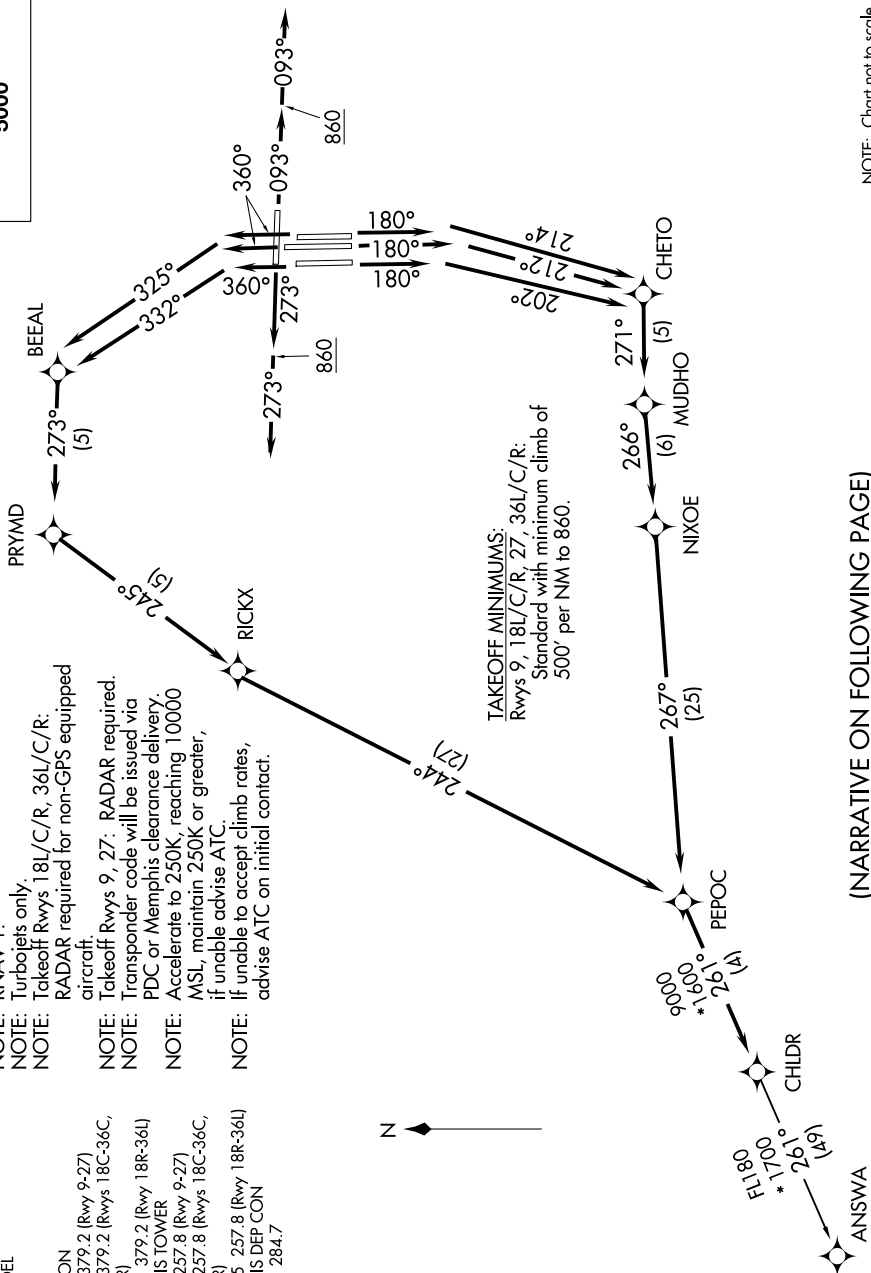
D-ATIS  
1127.75  
CLINC D  
1125.2  
CPDLC  
GND CO  
1121.0  
1121.9  
118L-36FF  
1121.65  
MEMPH  
1118.3  
1119.7  
118L-36FF  
1128.42  
MEMPH  
1124.65

NOTE: DME/DME/IRU or GPS required.

NOTE: RNAV 1.  
NOTE: Turbojets only.

NOTE: Takeoff RWYs 10L/C/R, 30L/C/R. RADAR required for non-GPS equipped aircraft.

**TOP ALTITUDE:**  
**5000**



NOTE: Chart not to scale.

(NARRATIVE ON FOLLOWING PAGE)

SE-1, 07 AUG 2025 to 04 SEP 2025

## CHLDR FIVE DEPARTURE (RNAV)

(CHLDR5.CHLDR) 31DEC20

MEMPHIS, TENNESSEE  
MEMPHIS INTL (MEM)