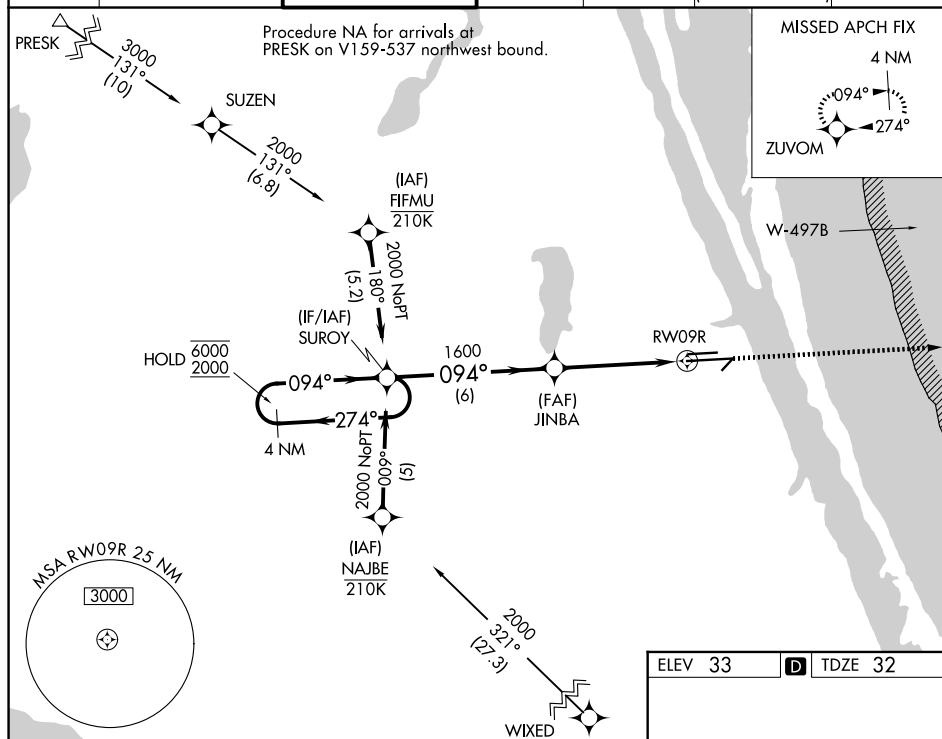


WAAS CH <b>60901</b> <b>W09B</b>	APP CRS <b>094°</b>	Rwy Ldg <b>10181</b> TDZE <b>32</b> Apt Elev <b>33</b>
----------------------------------------	------------------------	--------------------------------------------------------------

RNAV (GPS) RWY 9R  
MELBOURNE ORLANDO INTL (MLB)

RNP APCH - GPS.					MALSR		MISSED APPROACH: Climb to 2000 direct ZUVOM and hold.	
<div><div><div></div><div></div></div><div>For uncompensated Baro-VNAV systems, LNAV/VNAV NA below 2°C or above 54°C.</div></div>					<div><div>A5</div><div></div></div>			
ATIS 132.55	ORLANDO APP CON 126.025 281.425	MELBOURNE TOWER ★ 118.2(CTAF) 0 257.8	GND CON 121.9	CLNC DEL 121.9	CLNC DEL 126.025 (When twr closed)	UNICOM 122.95		



4 NM Holding Pattern

VGS1 and RNAV glidepath not coincident (VGS1 Angle 3.00/TCH 83).

2000 ↑ ZUVMOM

SUROY

JINBA 1600

1.1 NM to RW09R

1.1 NM

GP 3.00° TCH 55

6000 ← 274°

2000 094° →

094°

1600

6 NM

3.6 NM

CATEGORY	A	B	C	D
LPV DA	232/18	200 (200-½)		
RNAV/ VNAV DA	427/35	395 (400-5%)		
RNAV MDA	480/24	448 (500-½)	480/45	448 (500-¾)
CIRCLING	500-1 467 (500-1)	560-1 527 (600-1)	680-1¾ 647 (700-1¾)	880-2¾ 847 (900-2¾)