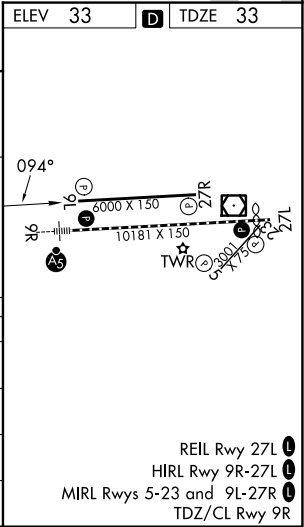
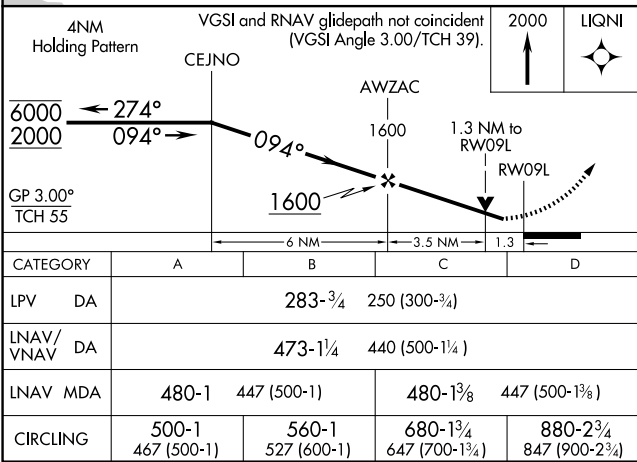
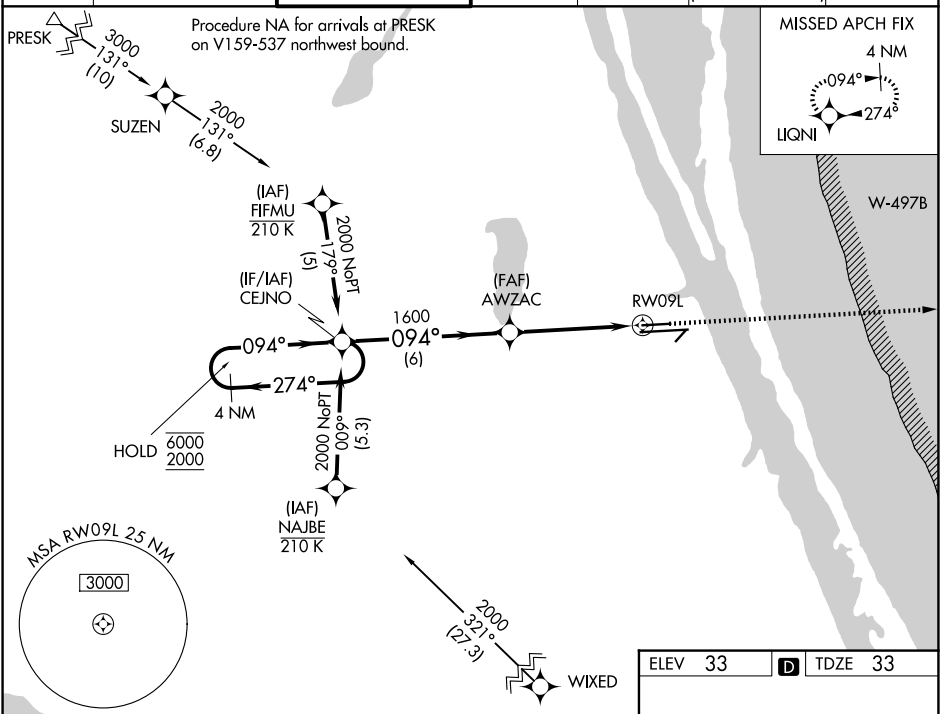


WAAS CH 65601 W09A	APP CRS 094°	Rwy Ldg TDZE 33 Apt Elev 33
--	------------------------	---

RNAV (GPS) RWY 9L
MELBOURNE ORLANDO INTL (MLB)

RNP APCH - GPS.					MISSED APPROACH: Climb to 2000 direct LIQNI and hold.	
⚠ For uncompensated Baro-VNAV systems, LNAV/VNAV NA below 2°C or above 54°C. Rwy 9L helicopter visibility reduction below ¾ SM NA.						
ATIS 132.55	ORLANDO APP CON 126.025 281.425	MELBOURNE TOWER ★ 118.2 (CTAF) 0 257.8	GND CON 121.9	CLNC DEL 121.9	CLNC DEL 126.025 (When twr closed)	UNICOM 122.95



SE-3, 07 AUG 2025 to 04 SEP 2025

SE-3, 07 AUG 2025 to 04 SEP 2025