




VORTAC OED 113.6 Chan 83	APP CRS 146°	Rwy Ldg 8800 TDZE 1303 Apt Elev 1335
---------------------------------------	------------------------	---

VOR/DME RWY 14
ROGUE VALLEY INTL/MEDFORD (MFR)

	Inop table does not apply to S-14 Cat A. For inop ALS
	increase S-14 Cat B visibility to 1½ SM. Circling NA for
	Cats C and D northeast of Rwy 14-32.

MALSR

MISSED APPROACH: Climb to 2900 then climbing right turn to 6400 direct OED VORTAC and hold, continue climb-in-hold to 6400.

ATIS 127.25	CASCADE APP CON ★ 124.3 379.9	MEDFORD TOWER ★ 119.4 (CTAF) 0 257.8	GND CON 121.8	UNICOM 122.95
----------------	----------------------------------	---	------------------	------------------

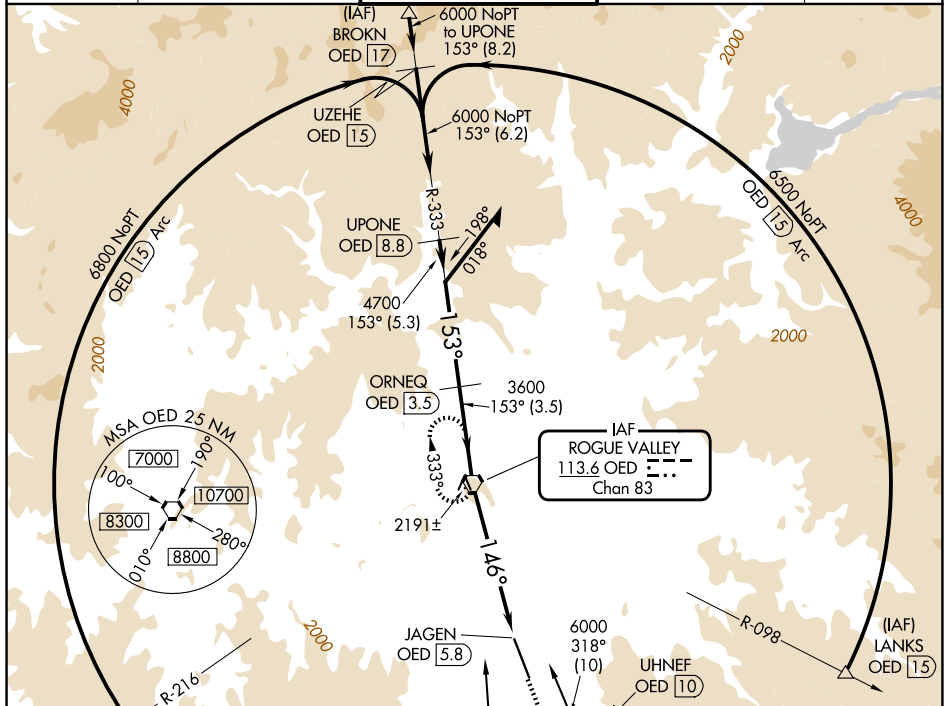


Figure 10 illustrates a non-parallel VGS and VORTAC. The top diagram shows a VGS (VOR) and a VORTAC (VOR/TACAN) with their respective OEDs (15 and 10) and a 337° bearing. The middle diagram shows a VGS with a 3.00° angle and a VORTAC with a 3.63° angle, with a 12 NM separation. The bottom diagram shows a VGS with a 3.00° angle and a VORTAC with a 3.63° angle, with a 12 NM separation. The right diagram shows a VGS with a 3.00° angle and a VORTAC with a 3.63° angle, with a 12 NM separation.