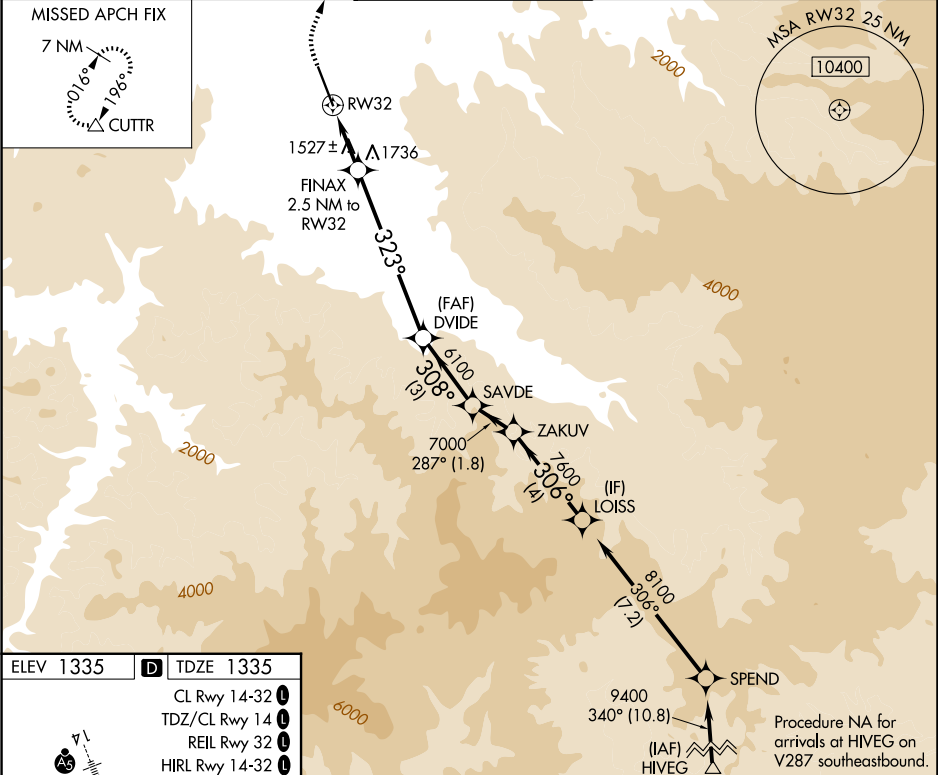


WAAS CH 56544 W32A	APP CRS 323°	Rwy Ldg TDZE 1335 Apt Elev 1335
--	------------------------	---

RNAV (GPS) Y RWY 32

ROGUE VALLEY INTL/MEDFORD (MFR)

RNP APCH - GPS.		MISSED APPROACH: Climb to 1900 then climbing right turn to 10500 direct CUTTR and hold, continue climb-in-hold to 10500.		
Baro-VNAV NA.				
ATIS 127.25	CASCADE APP CON* 124.3 379.9	MEDFORD TOWER* 119.4 (CTAF) 0 257.8	GND CON 121.8	UNICOM 122.95



1900		10500	CUTTR	VGSI and RNAV glidepath not coincident (VGSI Angle 3.00°/TCH 50).		LOISS	
FINAX 2.5 NM to RW32		DIVE 6100		SAVDE 7000		ZAKUV 7600	
RW32		1.2 NM to RW32		323° 2700		308° 6100	
1.2		1.3		6.5 NM		3 NM	
CATEGORY		A		B		C	
LPV		DA		1610-7/8 275 (300-7/8)		NA	
LNAV/VNAV		DA		1768-1 1/4 433 (500-1 1/4)		NA	
LNAV		MDA		1780-1 445 (500-1)		NA	
CIRCLING				2000-1 665 (700-1)		NA	