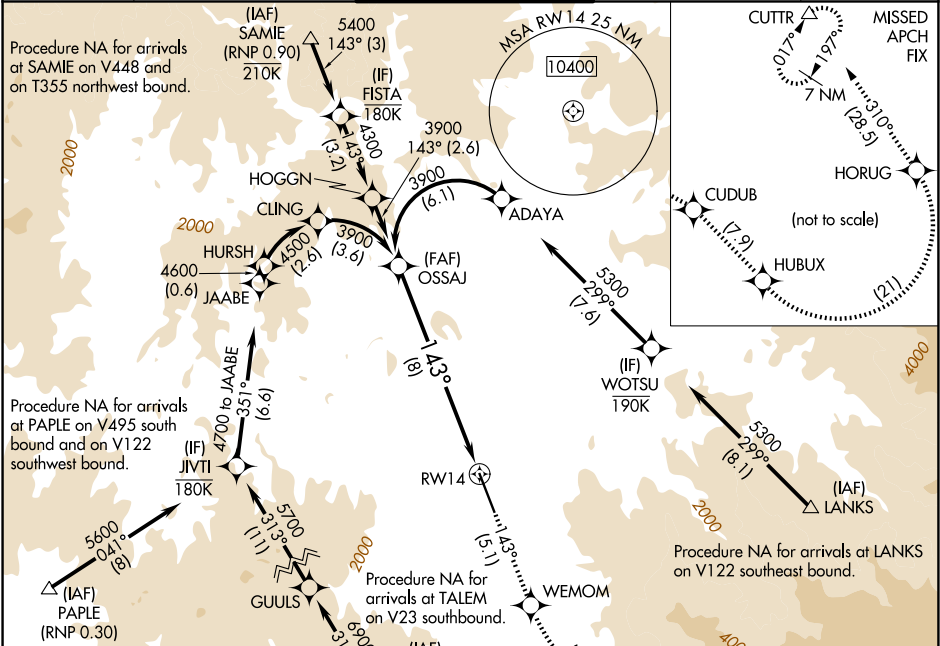


APP CRS 143°	Rwy Ldg TDZE 1303	8800 1335
Apt Elev		

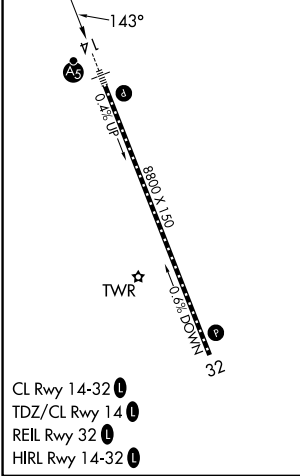
RNAV (RNP) Z RWY 14
ROGUE VALLEY INTL/MEDFORD (MF'R)

RNP AR APCH-GPS. ▼ -2°C	For uncompensated Baro-VNAV systems, procedure NA below -6°C or above 54°C. For inop ALS, increase RNP 0.30 all Cats visibility to 2 SM.	MALSR A5	MISSED APPROACH: Climb to 9000 on track 143° to WEMOM, left turn to CUDUB, right turn HUBUX, left turn HORUG, then on track 310° to CUTTR and hold. * Missed approach requires minimum climb of 244 feet per NM to 5000.
-------------------------------	--	-------------	--

ATIS 127.25	CASCADE APP CON* 124.3 379.9	MEDFORD TOWER* 119.4 (CTAF) 0 257.8	GND CON 121.8	UNICOM 122.95
-----------------------	--	---	-------------------------	-------------------------



ELEV 1335	TDZE 1303
-----------	-----------



9000	WEMOM	CUDUB	HUBUX	HORUG	CUTTR
tr 143°					

OSSAJ

3900

GP 3.00°

TCH 58

143°

8 NM

RW 14

VGSI and RNAV glidepath not coincident (VGSI Angle 3.00/TCH 73). See planview for multiple IF locations.

CATEGORY	A	B	C	D
RNP 0.30 DA*	1759/45	456 (500-7%)		
RNP 0.30 DA	2049-1 3/4	746 (800-1 3/4)		

AUTHORIZATION REQUIRED

NW-1, 07 AUG 2025 to 04 SEP 2025

NW-1, 07 AUG 2025 to 04 SEP 2025