




LOC/DME I-MFR 110.3 Chan 40	APP CRS 323°	Rwy Ldg TDZE Apt Elev 1335	N/A N/A
---	------------------------	---	--------------------------

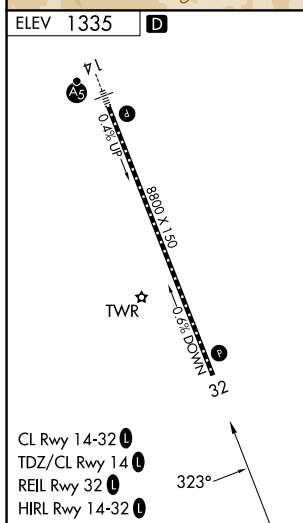
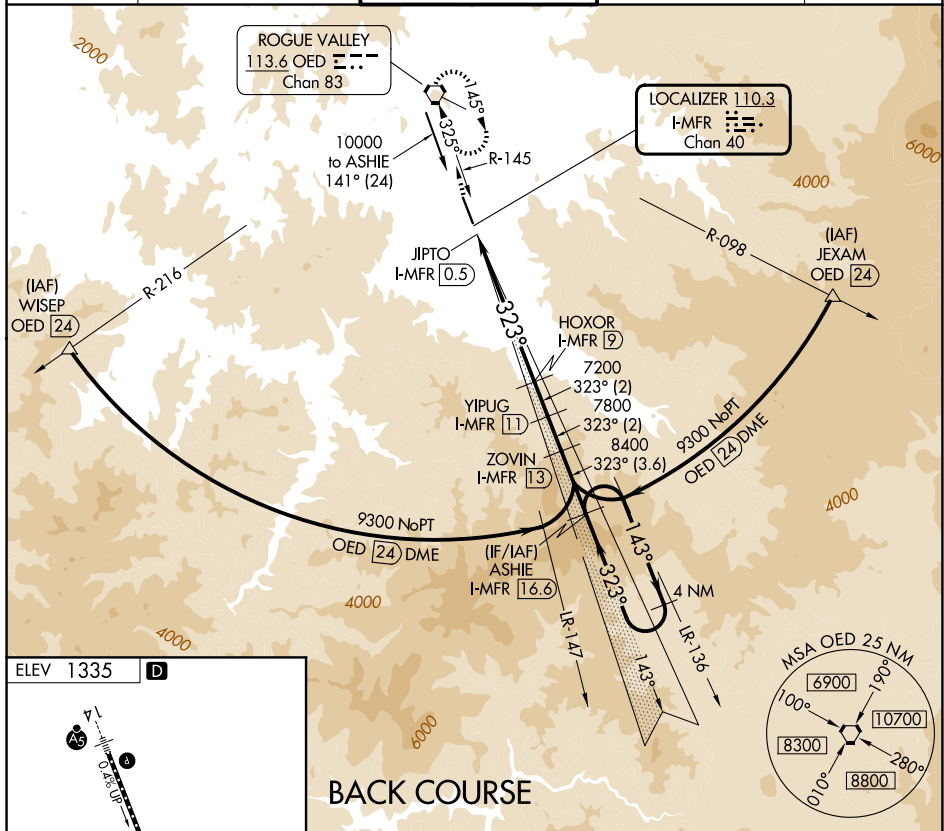
LOC/DME BC-B


ROGUE VALLEY INTL/MEDFORD (MFR)




 Visibility reduction by helicopters NA. Circling NA for Cats C and D northeast of Rwy 14-32. -2°C

MISSED APPROACH: Climb to 7600 direct OED VORTAC and hold, continue climb-in-hold to 7600.

ATIS 127.25	CASCADE APP CON ★ 124.3 379.9	MEDFORD TOWER ★ 119.4 (CTAF) 0 257.8	GND CON 121.8	UNICOM 122.95
-----------------------	---	--	-------------------------	-------------------------



7600 ↑	OED 	VSGI and descent angles not coincident (VGSJ Angle 3.00/TCH 50).				ASHIE I-MFR <u>16.6</u>	4 NM Holding Pattern
Disregard GS indications.		HOXOR I-MFR <u>9</u>	YIPUG I-MFR <u>13</u>	ZOVIN I-MFR <u>11</u>	323°	143° → 9300	
JIPTO I-MFR <u>0.5</u>	5.98° TCH 45°	7200	7800	8400	← 323°		
0.7		8.5 NM		2 NM	2 NM	3.6 NM	
CATEGORY	A		B		C		D
CIRCLING	3540-1½ 2205 (2300-1½)		3540-1½ 2205 (2300-1½)		3540-3		2205 (2300-3)