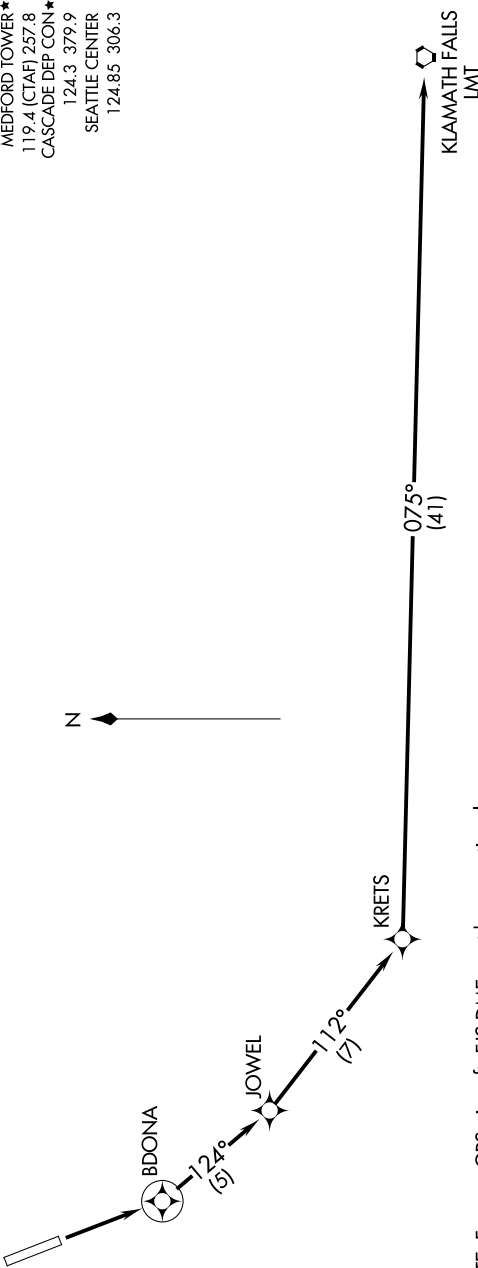


NW-1, 07 AUG 2025 to 04 SEP 2025

ATIS
127.25
GND CON
121.8
MEDFORD TOWER*
119.4 (CTAF) 257.8
CASCADE DEP CON*
124.3 379.9
SEATTLE CENTER
124.85 306.3

RNAV 1 - DME/DME/IRU or GPS.
RADAR required for non-GPS equipped aircraft.

TOP ALTITUDE:
ASSIGNED BY ATC



NOTE: For non-GPS aircraft, FJS DME must be operational.

TAKEOFF MINIMUMS
Rwy 14: Standard with minimum climb of 425' per NM to 6400.

NOTE: Chart not to scale.

DEPARTURE ROUTE DESCRIPTION

▼

TAKEOFF RUNWAY 14: Climb direct BDONA, then on track 124° to JOWEL, then on track 112° to KRETS, then on track 075° to LMT VORTAC. Expect RADAR vectors on course. Maintain assigned altitude. Expect filed altitude five minutes after departure.