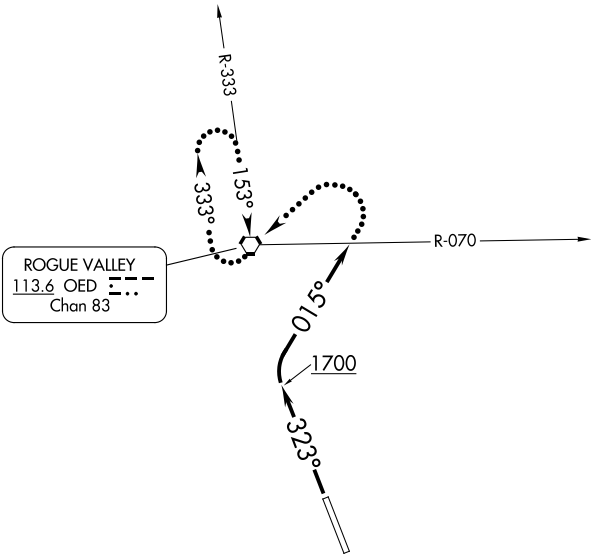


CASCADE DEP CON ★  
124.3 379.9  
ATIS  
127.25  
GND CON  
121.8  
MEDFORD TOWER ★  
119.4 (CTAF) 257.8  
SEATTLE CENTER  
124.85 306.3

TOP ALTITUDE:  
11000



TAKEOFF MINIMUMS

Rwys 14: NA - ATC.  
Rwy 32: Standard with minimum climb of 410' per NM to 6300.

NOTE: Chart not to scale.



DEPARTURE ROUTE DESCRIPTION

TAKEOFF RUNWAY 32: Climb to 1700 on heading 323° then climbing right turn heading 015°, maintain 11000 or assigned altitude, expect RADAR vectors to assigned route; expect filed altitude/flight level five minutes after departure.

LOST COMMUNICATIONS: If no contact with ATC crossing the OED R-070, turn left, proceed direct OED VORTAC, continue climb in holding pattern to minimum crossing altitude/minimum enroute altitude before proceeding on course.

NW-1, 07 AUG 2025 to 04 SEP 2025

NW-1, 07 AUG 2025 to 04 SEP 2025