

WAAS CH 72902 W27A	APP CRS 269°	Rwy Idg TDZE 862 Apt Elev 869
--	------------------------	---


RNAV (GPS) RWY 27

THE EASTERN IOWA (CID)

▼ Baro-VNAV NA when using Iowa City altimeter setting. For uncompensated Baro-VNAV systems, LNAV/VNAV NA below -16°C (4°F) or above 47°C (116°F). DME/DME RNP-0.3 NA.

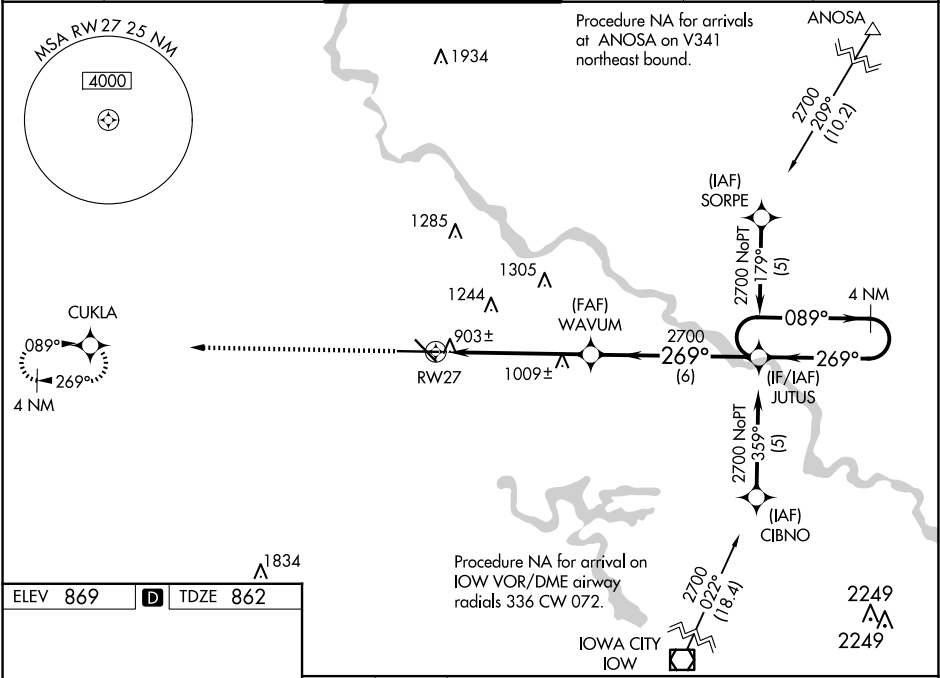
▲ When local altimeter setting not received, use Iowa City altimeter setting; increase LPV DA to 1192 feet; increase LNAV/VNAV DA to 1243 feet; increase all MDAs 80 feet and Circling visibility Cat C and D ¼ SM. For inop MALS increase LNAV/VNAV Cat D visibility to RVR 5000 and LNAV Cat D visibility to RVR 6000. VDP NA when using Iowa City altimeter setting.

MALS



MISSED APPROACH:
Climb to 2500 direct
CUKLA and hold.

ATIS 124.15	CEDAR RAPIDS APP CON★ 119.7 266.8	CEDAR RAPIDS TOWER★ 118.7 (CTAF) 266.8	GND CON 121.6	CLNC DEL 125.45	UNICOM 122.95
-----------------------	---	--	-------------------------	---------------------------	-------------------------



2500 CUKLA

WAVUM JUTUS

4 NM Holding Pattern

*LNAV only *1.1 NM to RW27

RW27

269° 2700 089° 2700 269°

GP 3.00° TCH 49

1.1 4.4 NM 6 NM

CATEGORY	A	B	C	D
LPV DA	1112/24 250 (300-½)			
LNAV/VNAV DA	1163/24 301 (300-½)			1163/40 301 (300-¾)
LNAV MDA	1260/24 398 (400-½)			1260/50 398 (400-1)
CIRCLING	1280-1 411 (500-1)	1320-1 451 (500-1)	1560-2 691 (700-2)	1560-2¼ 691 (700-2¼)

MIRL Rwy 13-31
HIRL Rwy 9-27
REIL Rwy 13