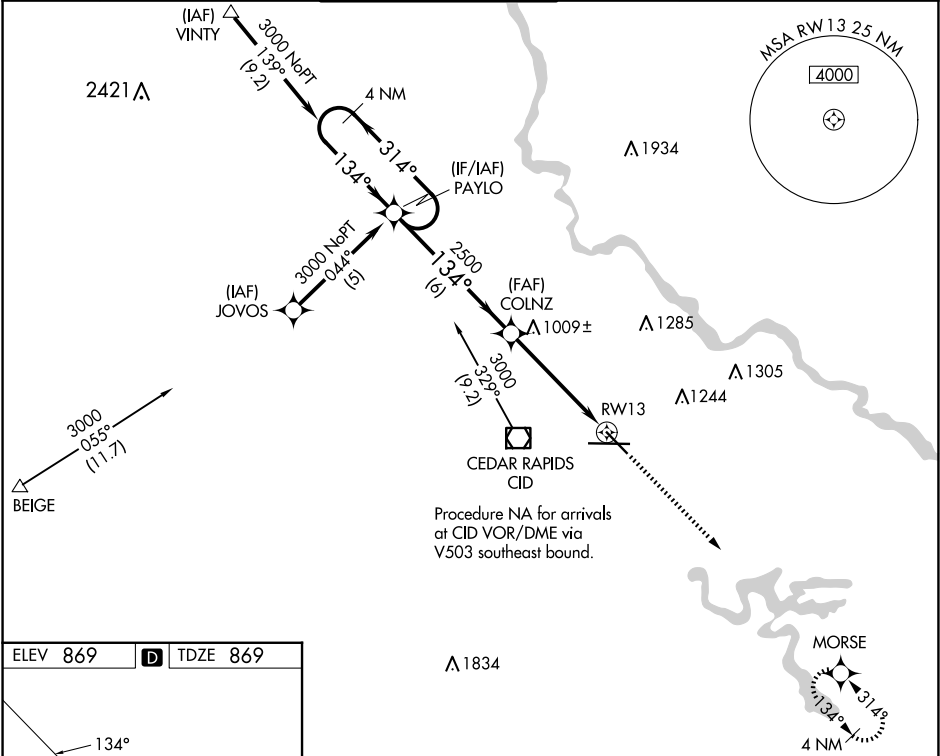


WAAS CH 86201 W13A	APP CRS 134°	Rwy ldg TDZE Apt Elev	6200 869 869
--	------------------------	-----------------------------	---

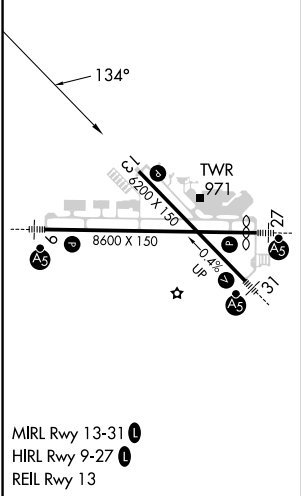
RNAV (GPS) RWY 13
THE EASTERN IOWA (CID)

RNP APCH.	MISSED APPROACH: Climb to 3000 direct MORSE and hold.
Baro-VNAV NA below -16°C (4°F).	

ATIS 124.15	CEDAR RAPIDS APP CON ★ 119.7 266.8	CEDAR RAPIDS TOWER ★ 118.7 (CTAF) 266.8	GND CON 121.6	CLNC DEL 125.45	UNICOM 122.95
-----------------------	--	---	-------------------------	---------------------------	-------------------------



ELEV 869	D	TDZE 869
----------	---	----------



CEDAR RAPIDS, IOWA
Amdt 1D 07NOV19

<div>4 NM Holding Pattern</div> <div>PAYLO</div> <div>GP 3.00° TCH 40</div>				<div>VGSI and descent angles not coincident (VGSI Angle 3.00/TCH 51).</div> <div>COLNZ</div>		<div>3000</div> <div>↑</div>	<div>MORSE</div> <div>✧</div>
<div>3000 ← 314°</div> <div>134° →</div>				<div>134°</div> <div>2500</div>		<div>*LNNAV only.</div> <div>*1 NM to RW13</div> <div>RW13</div>	
				<div>6 NM</div> <div>3.9 NM</div> <div>1 NM</div>			
CATEGORY	A	B	C	D			
LPV DA	1120-1 251 (300-1)						
LNNAV/ VNAV DA	1200-1¼ 331 (400-1¼)						
LNNAV MDA	1260-1 391 (400-1)					1260-1¼ 391 (400-1¼)	

THE EASTERN IOWA (CID)
RNAV (GPS) RWY 13

NC-3, 07 AUG 2025 to 04 SEP 2025

NC-3, 07 AUG 2025 to 04 SEP 2025