

LOC I-CID	APP CRS	Rwy Idg	8175
<b>109.3</b>	<b>089°</b>	TDZE	<b>857</b>
		Apt Elev	<b>869</b>

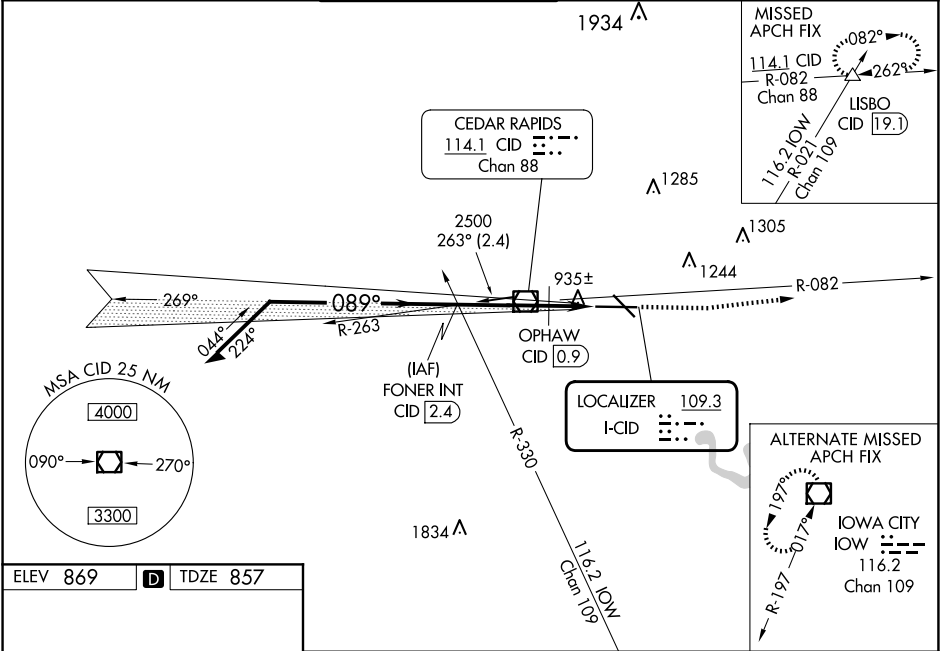
ILS or LOC RWY 9  
THE EASTERN IOWA (CID)

**⚠** When local altimeter setting not received, use Iowa City altimeter setting and increase all DA 64 feet and all MDA 80 feet; increase S-LOC Cat D visibility to RVR 6000. OPHAW fix minimums: increase S-LOC Cat C visibility to RVR 4000 and Cat D to RVR 6000. When using Iowa City altimeter setting, for inop MALSR, increase S-ILS 9 all Cats visibility to RVR 5000. Autopilot coupled approach NA below 1100 MSL. #RVR 1800 authorized with use of FD or HUD to DA (NA when using Iowa City altimeter setting).

**MALSR**

**MISSED APPROACH:** Climb to 1400 then climb to 2700 via CID VOR/DME R-082 to LISBO/CID VOR/DME 19.1 DME and hold.

ATIS <b>124.15</b>	CEDAR RAPIDS APP CON ★ <b>119.7 266.8</b>	CEDAR RAPIDS TOWER ★ <b>118.7 (CTAF) 266.8</b>	GND CON <b>121.6</b>	CLNC DEL <b>125.45</b>	UNICOM <b>122.95</b>
-----------------------	--	---	-------------------------	---------------------------	-------------------------



ELEV **869** **D** TDZE **857**

**HIRL** Rwy 9-27 **1**  
**MIRL** Rwy 13-31 **1**  
**REIL** Rwy 13

FAF to MAP 5 NM

Knots	60	90	120	150	180
Min:Sec	5:00	3:20	2:30	2:00	1:40

**TWR** 971

**AS** 8600 X 150

**AS** 0.4% Up

**AS** 131

**AS** 089°

\*1440 when using Iowa City altimeter setting.

Remain within 10 NM

**2500** **089°** **2500**

GS 3.00° TCH 49

VGSI and ILS glidepath not coincident (VGSI Angle 3.00/TCH 60).

**3.3 NM** **1.7 NM**

**1400** **2700** LISBO **Δ**

**1400** **2700** CID R-082

**LOC only**

**1360** **2.5**

CATEGORY	A	B	C	D
S-ILS 9#	1057/24 200 (200-½)			
S-LOC 9	1360/24 503 (500-½)		1360/50 503 (500-1)	
OPHAW FIX MINIMUMS				
S-LOC 9	1220/24 363 (400-½)			1220/40 363 (400-¾)

NC-3, 07 AUG 2025 to 04 SEP 2025

NC-3, 07 AUG 2025 to 04 SEP 2025