

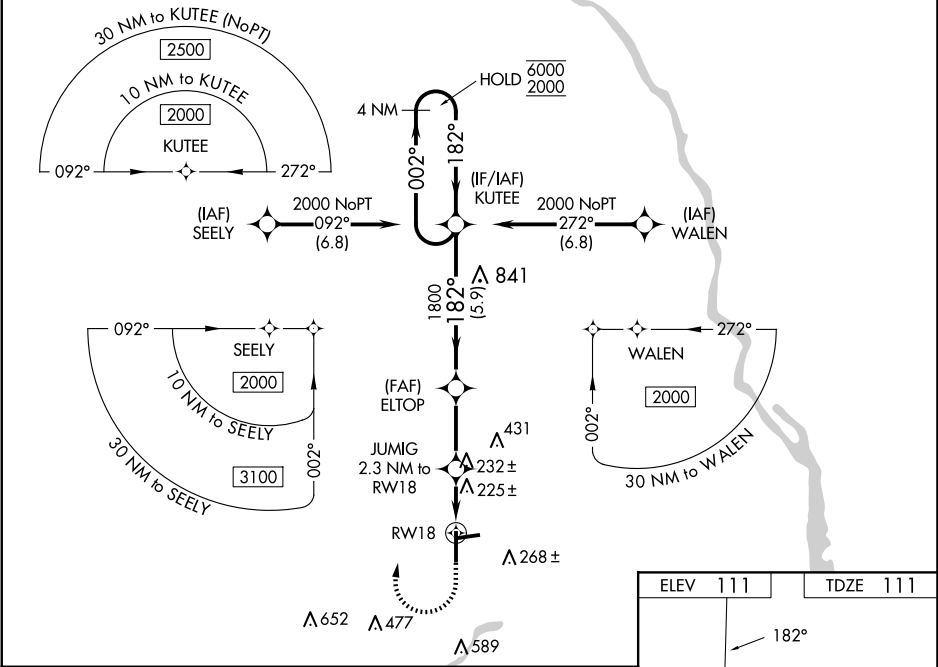
RNP APCH - GPS.

▼ Baro-VNAV and VDP NA when using BGE altimeter setting. For uncompensated Baro-VNAV systems, LNAV/VNAV NA below -2°C or above 54°C. Circling Rwy 8, 26 NA at night.

▲ Rwy 18 helicopter visibility reduction below ¾ SM NA. When local altimeter setting not received, use BGE altimeter setting: increase LPV DA to 479 feet; increase LNAV/VNAV DA to 559 feet and all visibilities ¾ SM; increase all MDAs 80 feet and LNAV visibility Cats C and D ¾ SM, and Circling visibility Cat D ¼ SM.

MISSED APPROACH: Climb to 700 then climbing right turn to 2000 direct KUTEE and hold.

ASOS 133.525	CAIRNS APP CON ★ 133.75 270.35	UNICOM 123.0 (CTAF) 0
------------------------	--	---------------------------------



4 NM Holding Pattern KUTEE		700 2000 KUTEE	
6000 ← 002° 182° → 2000		GP 3.00° TCH 40	
ELTOP 1800		JUMIG 2.3 NM to RW18	
1800		1.1 NM to RW18	
880		RW18	
5.9 NM		2.9 NM	
1.2 NM		1.1 NM	
CATEGORY	A	B	C
LPV DA	407-1		296 (300-1)
LNAV/VNAV DA	487-1		376 (400-1)
LNAV MDA	480-1		369 (400-1)
CIRCLING	620-1	509 (600-1)	620-1½ 509 (600-1½)
			900-2½ 789 (800-2½)

MIRL Rwy 18-36 0