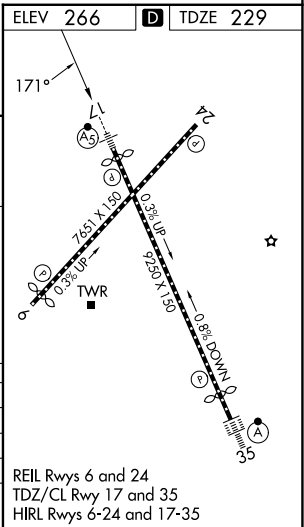
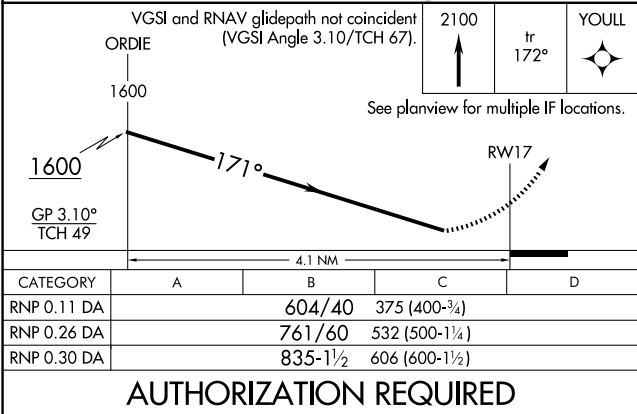
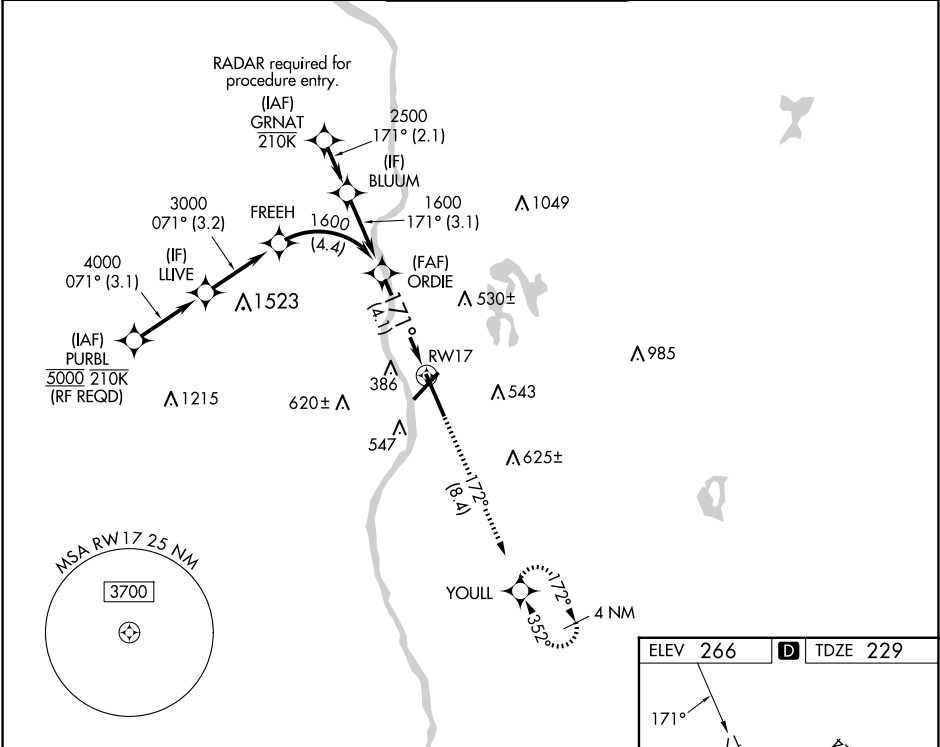


APP CRS	Rwy Ldg	8914
171°	TDZE	229
	Apt Elev	266

RNAV (RNP) Z RWY 17
MANCHESTER BOSTON RGNL (MHT')

▼ For uncompensated Baro-VNAV systems, procedure NA below -20°C (-4°F) or above 48°C (118°F). When local altimeter setting not received, procedure NA. GPS required. For inop MALSR, increase RNP 0.11 all Cats visibility to RVR 6000, RNP 0.26 all Cats visibility to 1¾ miles, and RNP 0.30 all Cats visibility to 2 miles.			MALSR AS	MISSED APPROACH: Climb to 2100 on track 172° to YOULL and hold.
ATIS 119.55	BOSTON APP CON 124.9 269.075	MANCHESTER TOWER 121.3 239.025	GND CON 121.9	CLNC DEL 135.9



AUTHORIZATION REQUIRED

REIL Rwy 6 and 24
TDZ/CL Rwy 17 and 35
HIRL Rwy 6-24 and 17-35

NE-1, 07 AUG 2025 to 04 SEP 2025

NE-1, 07 AUG 2025 to 04 SEP 2025