

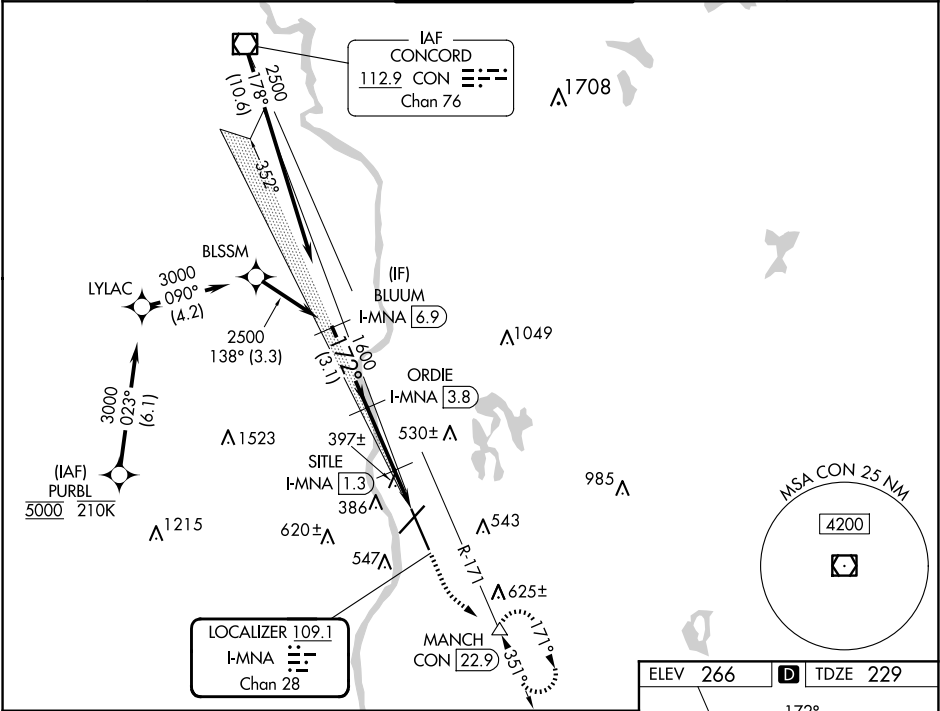
LOC/DME I-MNA	APP CRS	Rwy Ldg
109.1	172°	8914
Chan 28		TDZE 229
		Apt Elev 266

ILS or LOC RWY 17

MANCHESTER BOSTON RGNL (MHT)

RNP APCH - GPS. From PURBL.	MALSR	MISSED APPROACH: Climb to 900 then climbing left turn to 2100 on heading 145° and on CON VOR/DME R-171 to MANCH/CON 22.9 DME and hold, continue climb-in-hold to 2100.
DME required.		

ATIS 119.55	BOSTON APP CON 124.9 269.075	MANCHESTER TOWER 121.3 239.025	GND CON 121.9	CLNC DEL 135.9
-----------------------	--	--	-------------------------	--------------------------



VGSI and ILS glidepath not coincident (VGSI Angle 3.10/TCH 67).				
BLUUM I-MNA 6.9	ORDIE I-MNA 3.8	SITLE I-MNA 1.3	CON R-171	MANCH
2500	1600	780	900	2100
GS 3.10°	172°	1600	hdg 145°	
TCH 49				
3.1 NM 2.5 NM 1.6 NM				
CATEGORY	A	B	C	D
S-ILS 17	429/18		200 (200-½)	
S-LOC 17	660/24	431 (400-½)	660/40	431 (400-¾)
CIRCLING	880-1	614 (700-1)	980-2 714 (800-2)	1100-2¾ 834 (900-2¾)

