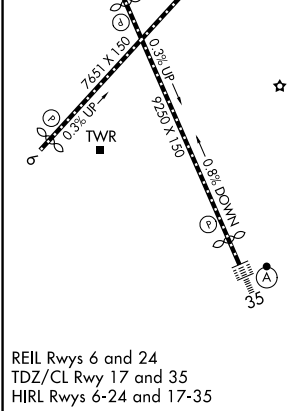
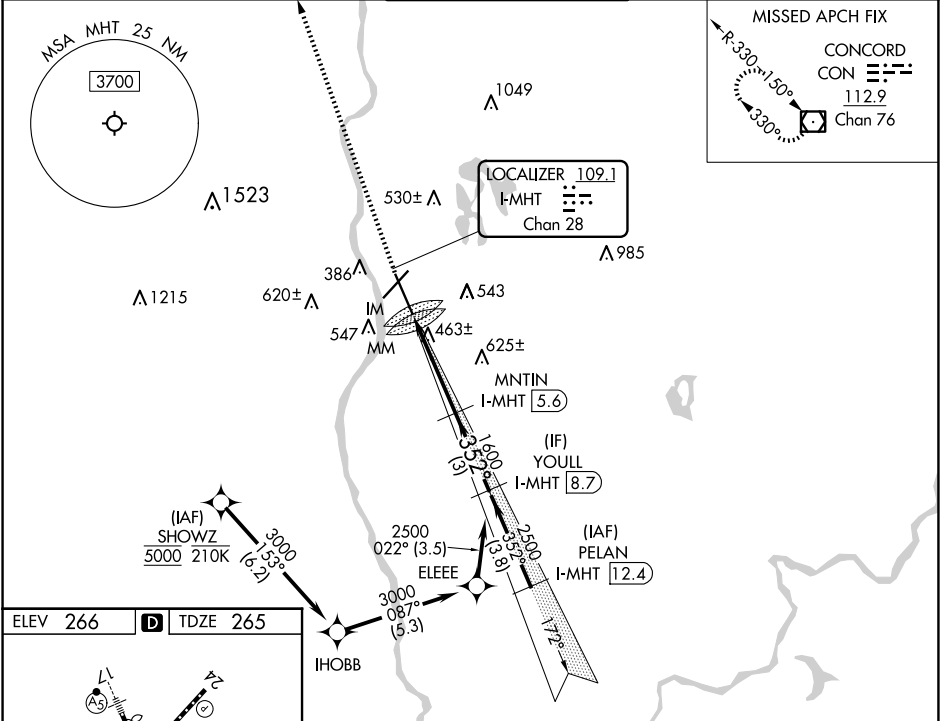

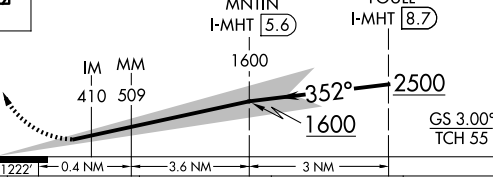


LOC/DME I-MHT <b>109.1</b> Chan <b>28</b>	APP CRS <b>352°</b>	Rwy Ldg <b>7650</b> TDZE <b>265</b> Apt Elev <b>266</b>
---	------------------------	---

ILS RWY 35 (CAT II & III)  
MANCHESTER BOSTON RGNL (MHT)

From SHOWZ: RNAV 1-DME/DME/IRU or GPS required. DME or RADAR required.		ALSF-2 	MISSED APPROACH: Climb to 4000 direct CON VOR/DME and hold.	
Rwy 35 helicopter visibility reduction below RVR 4000 NA.				
ATIS <b>119.55</b>	BOSTON APP CON <b>124.9 269.075</b>	MANCHESTER TOWER <b>121.3 239.025</b>	GND CON <b>121.9</b>	CLNC DEL <b>135.9</b>



4000 ↑	CON 	VGSI and ILS glidepath not coincident (VGSI Angle 3.00/TCH 68).			
					
CATEGORY	A	B	C	D	
S-ILS 35	CAT II RA 101/12 100 DA 365				
S-ILS 35	CAT III RVR 700				
CATEGORY II & III ILS - SPECIAL AIRCREW & AIRCRAFT CERTIFICATION REQUIRED					

NE-1, 07 AUG 2025 to 04 SEP 2025

NE-1, 07 AUG 2025 to 04 SEP 2025