

VORTAC MSN 108.6 Chan 23	APP CRS 310°	Rwy Idg 5846 TDZE 862 Apt Elev 887
--	------------------------	---

VOR RWY 32

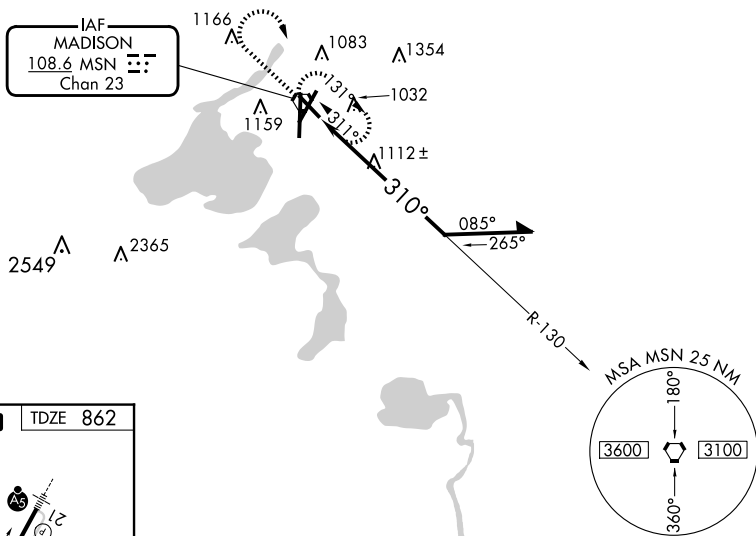
DANE COUNTY RGNL/TRUAX FLD (MSN)

T
A

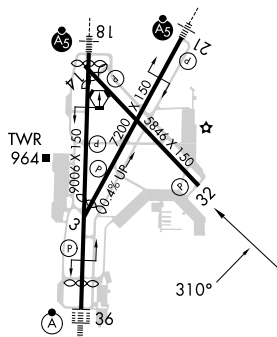
When VGSI inop, Straight-In and Circling Rwy 32 procedures NA at night. Visibility reduction by helicopters NA.

MISSED APPROACH: Climb to 2600 then right turn direct MSN VORTAC and hold.

ATIS 124.65 278.3	MADISON APP CON ★ 135.45 343.7	MADISON TOWER ★ 119.3 (CTAF) 0 257.8	GND CON 121.9 348.6	CLNC DEL 121.625	UNICOM 122.95
----------------------	-----------------------------------	---	------------------------	---------------------	------------------



ELEV 887	D	TDZE 862
----------	----------	----------

HIRL all Rwys **L**

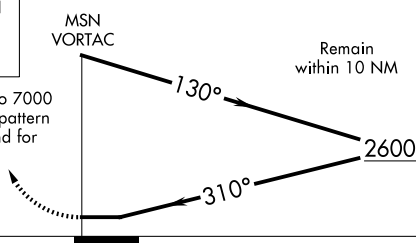
REIL Rwy 3, 14 and 32 L

2600 ↑		MSN 
-----------	---	--

Procedure Turn: Descend to 7000 in MSN VORTAC holding pattern prior to departing outbound for procedure turn.

MSN
VORTAC

Remain
within 10 NM



CATEGORY	A	B	C	D
S-32	1560-1	698 (700-1)	1560-2	698 (700-2)
C CIRCLING	1560-1	673 (700-1)	1560-2 673 (700-2)	1700-2 ³ / ₄ 813 (900-2 ³ / ₄)