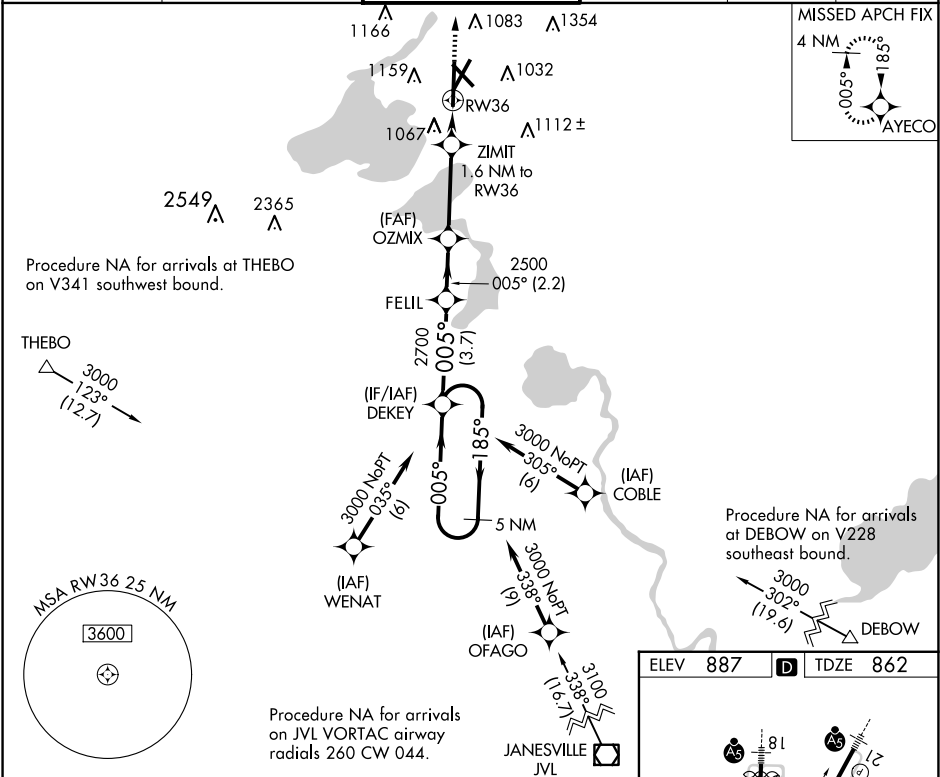


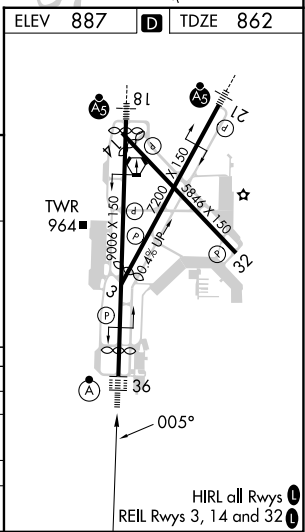
WAAS CH 82721 W36A	APP CRS 005°	Rwy Idg TDZE 862 Apt Elev 887	8005
--	------------------------	---	-------------

RNAV (GPS) RWY 36
DANE COUNTY RGNL/TRUAX FLD (MSN)

⚠ For uncompensated Baro-VNAV systems, LNAV/VNAV NA below -19°C (-2°F) or above 54°C (130°F). DME/DME RNP-0.3 NA. For inop ALSF-2, increase LNAV/VNAV all Cats visibility to 1½ miles. **RVR 1800 authorized with use of FD or AP or HUD to DA.				ALSF-2 	MISSED APPROACH: Climb to 3000 direct AYECO and hold.
ATIS 124.65 278.3	MADISON APP CON * 135.45 343.7	MADISON TOWER * 119.3 (CTAF) 0 257.8	GND CON 121.9 348.6	CLNC DEL 121.625	UNICOM 122.95



5 NM Holding Pattern DEKEY		3000 ← 185° 005° →		005° 2700		FELIL		OZMIX 2500		ZIMIT 1.6 NM to RW36		RW36		3000 AYECO ↑ ✦ *LNAV only	
GP 3.00° TCH 58		3.7 NM		2.2 NM		3.4 NM		1.6 NM		*1420					
CATEGORY	A	B		C		D									
LPV DA **	1062/24 200 (200-½)														
LNAV/VNAV DA	1331/60 469 (500-1¼)														
LNAV MDA	1300/24	438 (500-½)		1300/40		438 (500-¾)									
CIRCLING	1420-1 533 (600-1)	1460-1 573 (600-1)		1460-1½ 573 (600-½)		1700-2¾ 813 (900-2¾)									



EC-3, 07 AUG 2025 to 04 SEP 2025

EC-3, 07 AUG 2025 to 04 SEP 2025