

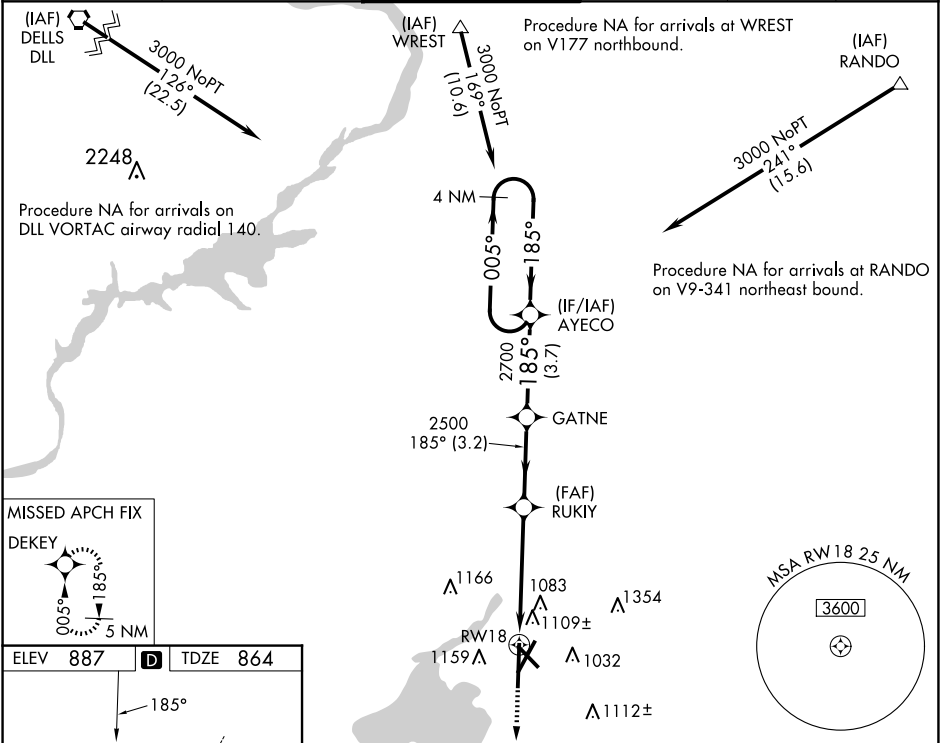
WAAS CH <b>42522</b> <b>W18A</b>	APP CRS <b>185°</b>	Rwy Idg TDZE <b>864</b> Apt Elev <b>887</b>
--	------------------------	---

RNAV (GPS) RWY 18

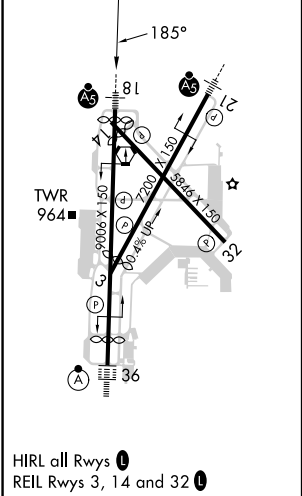
DANE COUNTY RGNL/TRUAX FLD (MSN)

<div><div><div></div><div></div></div><div>For uncompensated Baro-VNAV systems, LNAV/VNAV NA below -19°C (-2°F) or above 54°C (130°F). DME/DME RNP-0.3 NA. For inop MALSR, increase LNAV/VNAV all Cats visibility to 1½ mile and LNAV Cat C/D visibility to 1½ miles. ** RVR 1800 authorized with use of FD or AP or HUD to aid.</div></div>	<div>MALSR</div> <div><div><div></div><div></div></div></div>	MISSED APPROACH: Climb to 3000 direct DEKEY and hold.
--	---	---

ATIS <b>124.65 278.3</b>	MADISON APP CON ★ <b>135.45 343.7</b>	MADISON TOWER ★ <b>119.3 (CTAF) 0 257.8</b>	GND CON <b>121.9 348.6</b>	CLNC DEL <b>121.625</b>	UNICOM <b>122.95</b>
-----------------------------	--	--	-------------------------------	----------------------------	-------------------------



ELEV <b>887</b>	<b>D</b>	TDZE <b>864</b>
-----------------	----------	-----------------



3000 ↑	DEKEY 							
*LNAV only		*1.4 NM to RW18		RUKIY 2500	GATNE 2700	AYECO 3000	4 NM Holding Pattern	
		1.4	3.6 NM	3.2 NM	3.7 NM			
CATEGORY		A		B		C		D
LPV DA **				1064/24		200 (200-½)		
LNAV/ VNAV DA				1360-1¼		496 (500-1¼)		
LNAV MDA		1360/24		496 (500-½)		1360/55		496 (500-1)
CIRCLING		1420-1 533 (600-1)		1460-1 573 (600-1)		1460-1½ 573 (600-½)		1700-2¾ 813 (900-2¾)