

WAAS CH 56421 W10A	APP CRS 102°	Rwy ldg 4184 TDZE 430 Apt Elev 437
--	------------------------	---

RNAV (GPS) RWY 10

MACON DOWNTOWN (MAC)

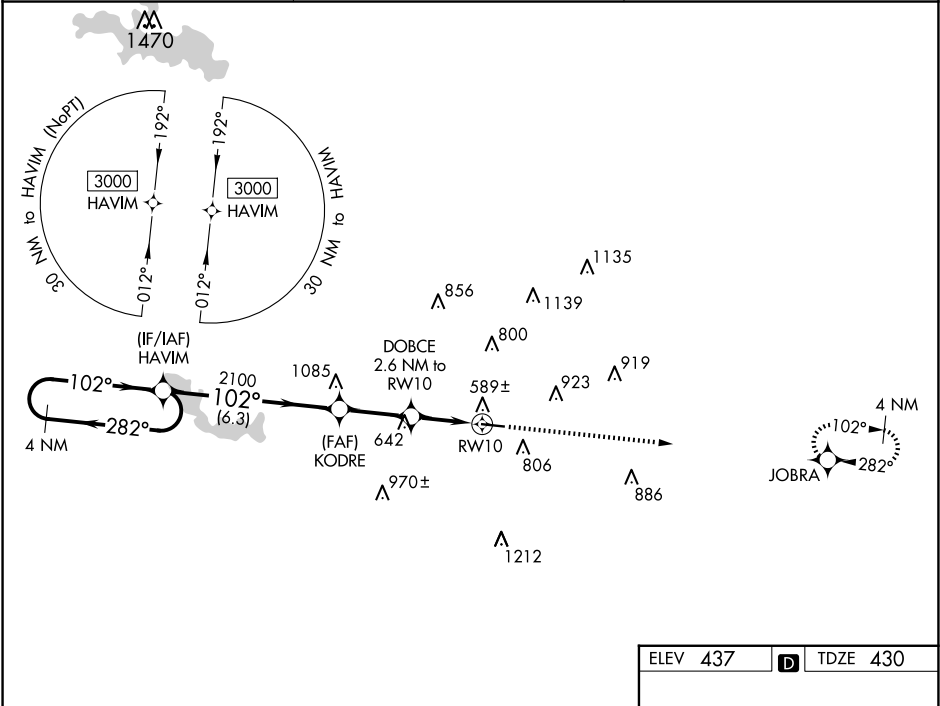
▼

NA

Baro-VNAV NA. DME/DME RNP-0.3 NA. Use Middle Georgia altimeter setting, when not received, use Robbins AFB altimeter setting and increase LPV DA to 726 feet, increase LNAV/VNAV DA to 833 feet and increase all MDA 20 feet.

MISSED APPROACH:
Climb to 3000 direct
JOBRA and hold.

MCN ASOS 120.775	ATLANTA APP CON ★ 124.2 279.6	UNICOM 123.0 (CTAF) 0
----------------------------	---	---------------------------------



4 NM Holding Pattern		VGSI and RNAV glidepath not coincident (VGSI Angle 3.00/TCH 23).		3000	JOBRA
3000		KODRE 2100		*LNAV only.	
GP 3.00° TCH 40		DOBCE 2.6 NM to RW10		RW10	
6.3 NM		2.6 NM		2.6 NM	
CATEGORY		A		B	
LPV DA		712-1		282 (300-1)	
LNAV/VNAV DA		819-1 ³ / ₈		389 (400-1 ³ / ₈)	
LNAV MDA		880-1 450 (500-1)		880-1 ³ / ₈ 450 (500-1 ³ / ₈)	
CIRCLING		1200-1 763 (800-1)		1320-2 ³ / ₄ 883 (900-2 ³ / ₄) 1480-3 1043 (1100-3)	

ELEV 437

D

TDZE 430

508

4694 X 100

28

102°

MIRL Rwy 10-28 0