

LUBBOCK, TEXAS

AL-241 (FAA)

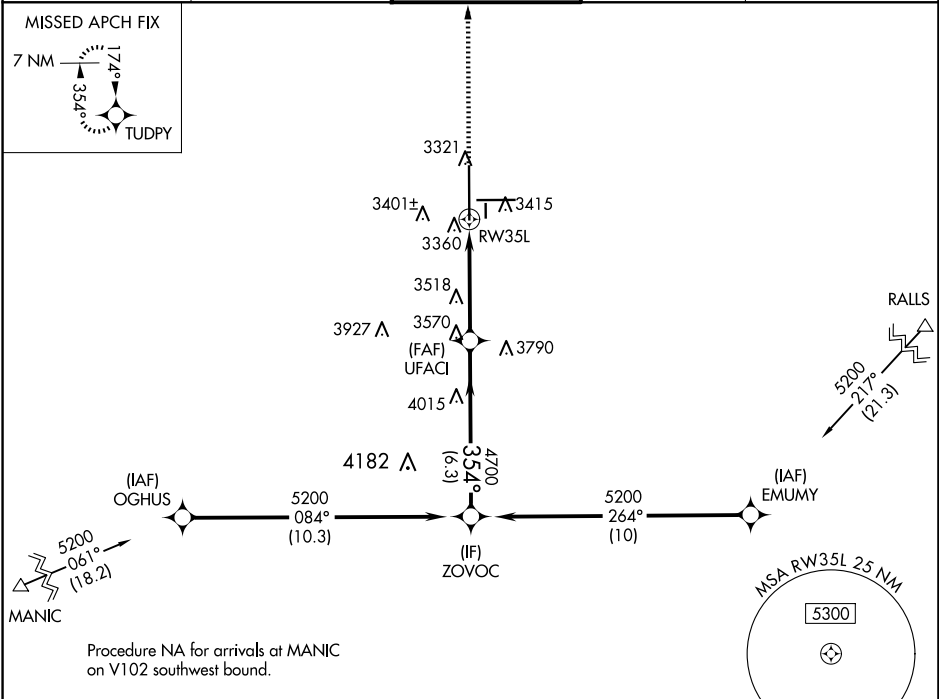
23222

WAAS CH 50128 W35A	APP CRS 354°	Rwy Idg TDZE 3254 Apt Elev 3282
--	------------------------	---

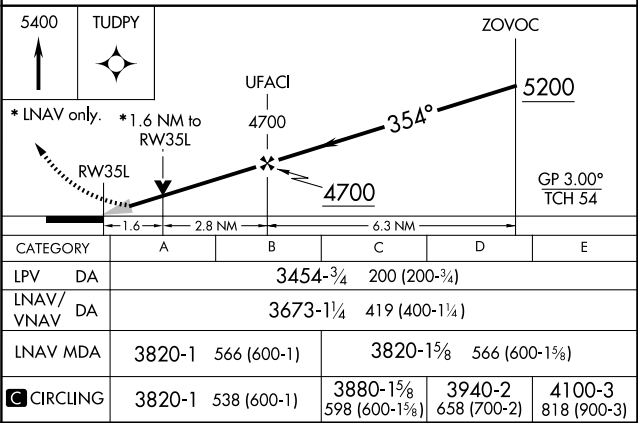
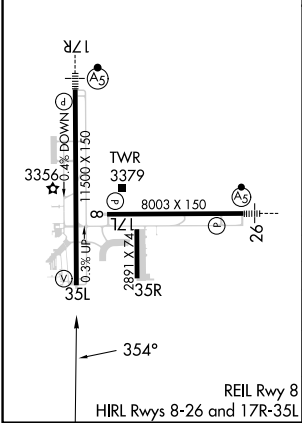
RNAV (GPS) Y RWY 35L
LUBBOCK PRESTON SMITH INTL (LBB)

RNP APCH. ▼ For uncompensated Baro-VNAV systems, LNAV/VNAV NA below -12° C or above 51° C. ▲	MISSED APPROACH: Climb to 5400 direct TUDPY and hold.
--	---

ATIS 125.3 270.275	LUBBOCK APP CON 119.2 351.8	LUBBOCK TOWER 120.5 239.3	GND CON 121.9 348.6	CLNC DEL 125.8 281.55
------------------------------	---------------------------------------	-------------------------------------	-------------------------------	---------------------------------



ELEV 3282	D	TDZE 3254
-----------	---	-----------



LUBBOCK, TEXAS
Amdt 2C 21MAY20

LUBBOCK PRESTON SMITH INTL (LBB)
RNAV (GPS) Y RWY 35L
33°40'N-101°49'W

SC-2, 07 AUG 2025 to 04 SEP 2025

SC-2, 07 AUG 2025 to 04 SEP 2025