

23222

RNAV (GPS) Y RWY 17R
LUBBOCK PRESTON SMITH INTL (LBB)

RNP APCH.

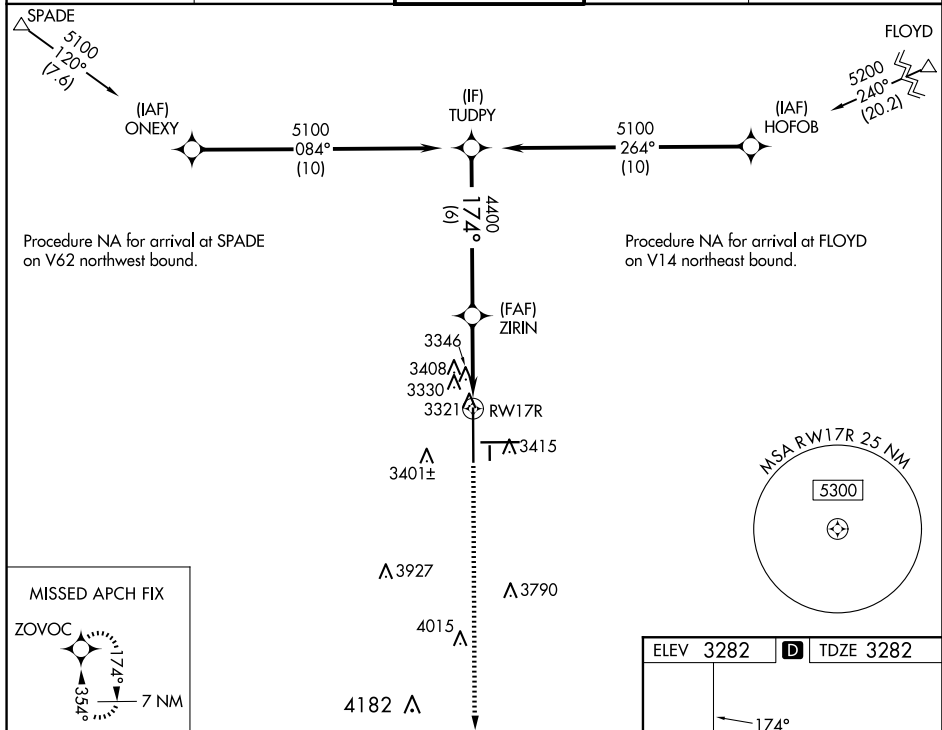
▼ For uncompensated Baro-VNAV systems, LNAV/VNAV NA below -12°C or above 51°C.
▲ For inop ALS increase LPV Cat E visibility to RVR 4000, LNAV/VNAV Cat E visibility to RVR 5000 and LNAV Cat A/B visibility to RVR 5500 and Cat C/D/E visibility to RVR 6000.
**RVR 1800 authorized with use of FD or AP or HUD to DA.

MALSR



MISSED APPROACH:
Climb to 5400 direct
ZOVOC and hold.

ATIS	LUBBOCK APP CON	LUBBOCK TOWER	GND CON	CLNC DEL
125.3 270.275	119.2 351.8	120.5 239.3	121.9 348.6	125.8 281.55



ZIRIN VORTOL

VGSI and RNAV glidepath not coincident
(VGSI Angle 3.00/TCH 69).

TUDPY 5100

GP 3.00°
TCH 53

174°

ZIRIN 4400

*1 NM to RW17R

*RNAV only.

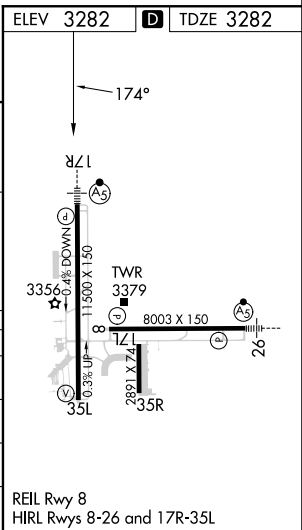
RW17R

6 NM

2.3 NM

1 NM

CATEGORY	A	B	C	D	E
LPV DA **	3482/24 200 (200-½)				
LNAV/ VNAV DA	3591/24 309 (400-½)				
LNAB MDA	3700/24	418 (500-½)	3700/40 418 (500-¾)		
C CIRCLING	3720-1 438 (500-1)	3740-1 458 (500-1)	3880-1½ 598 (600-1½)	3940-2 658 (700-2)	4100-3 818 (900-3)



LUBBOCK PRESTON SMITH INTL (LBB)
RNAV (GPS) Y RWY 17R

SC-2, 07 AUG 2025 to 04 SEP 2025