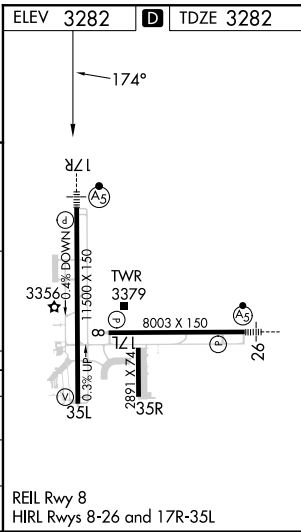
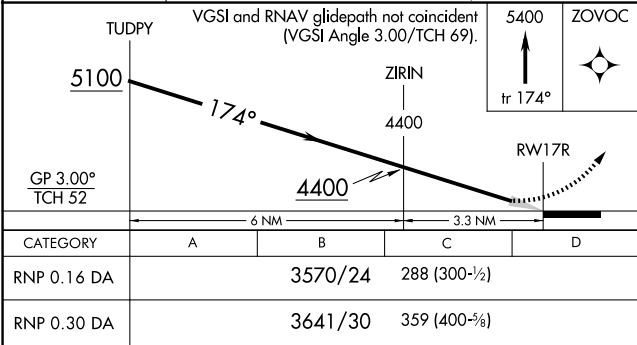
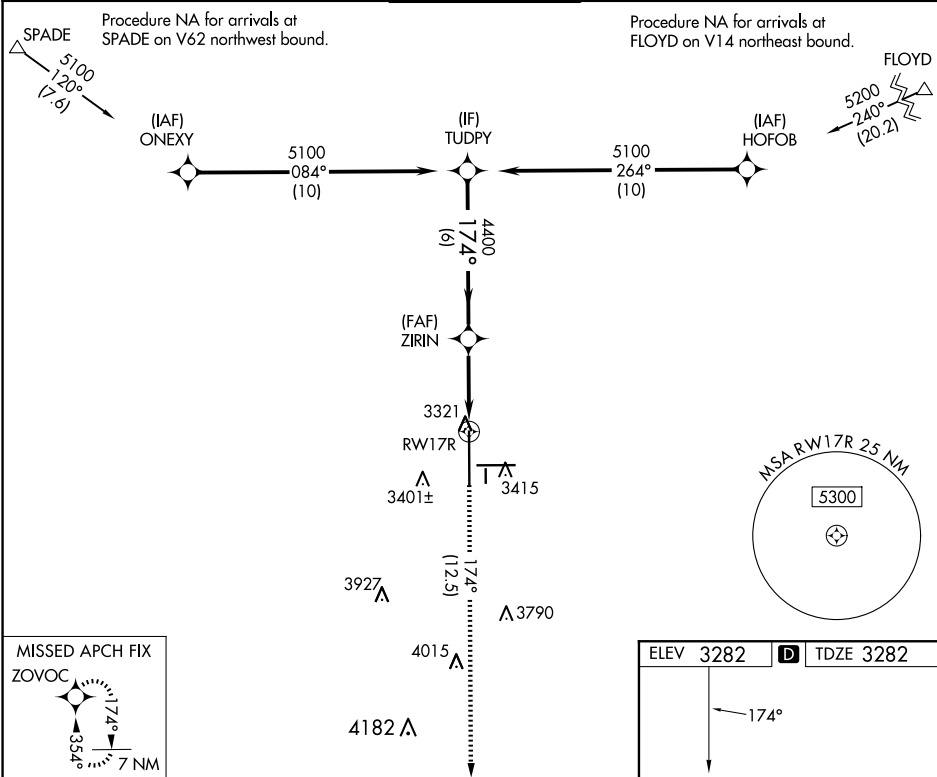


APP CRS 174°	Rwy Idg 11500
	TDZE 3282
	Apt Elev 3282

RNAV (RNP) Z RWY 17R
LUBBOCK PRESTON SMITH INTL (LBB)

RNP AR APCH - GPS, min RNP 0.50. Authorization required.	MALSR 	MISSED APPROACH: Climb to 5400 on 174° track to ZOVOG and hold.
For uncompensated Baro-VNAV systems, procedure NA below -11°C or above 54°C. For inop ALS, increase RNP 0.16 all Cats visibility to RVR 4500 and increase RNP 0.30 all Cats visibility to RVR 5500.		

ATIS 125.3 270.275	LUBBOCK APP CON 119.2 351.8	LUBBOCK TOWER 120.5 239.3	GND CON 121.9 348.6	CLNC DEL 125.8 281.55
------------------------------	---------------------------------------	-------------------------------------	-------------------------------	---------------------------------



AUTHORIZATION REQUIRED

SC-2, 07 AUG 2025 to 04 SEP 2025

SC-2, 07 AUG 2025 to 04 SEP 2025