
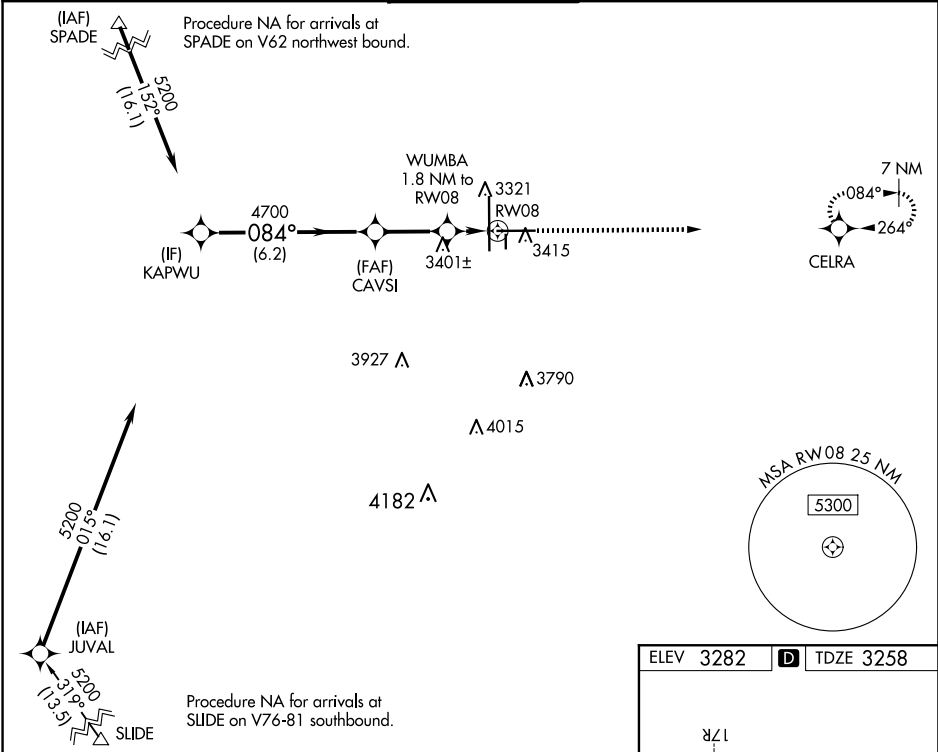


WAAS CH <b>97327</b> <b>W08A</b>	APP CRS <b>084°</b>	Rwy Idg TDZE Apt Elev	<b>8003</b> <b>3258</b> <b>3282</b>
--	------------------------	-----------------------------	---

**RNAV (GPS) RWY 8**  
LUBBOCK PRESTON SMITH INTL (LBB)

RNP APCH.	MISSED APPROACH: Climb to 5000 direct CELRA and hold.
 For uncompensated Baro-VNAV systems, LNAV/VNAV NA below -10°C or above 52°C.	

ATIS <b>125.3 270.275</b>	LUBBOCK APP CON <b>119.2 351.8</b>	LUBBOCK TOWER <b>120.5 239.3</b>	GND CON <b>121.9 348.6</b>	CLNC DEL <b>125.8 281.55</b>
------------------------------	---------------------------------------	-------------------------------------	-------------------------------	---------------------------------



KAPWU	5200	084°	CAVSI	4700	WUMBA	1.8 NM to RW08	5000	CELRA
GP 3.00°	TCH 50							
		6.2 NM	2.6 NM	0.8 NM	1 NM			
CATEGORY	A	B	C	D	E			
LPV DA		3458-3/4	200 (200-3/4)					
LNAV/VNAV DA		3544-7/8	286 (300-7/8)					
LNAV MDA	3640-1	382 (400-1)	3640-1 1/8	382 (400-1 1/8)				
CIRCLING	3720-1 438 (500-1)	3740-1 458 (500-1)	3880-1 1/2 598 (600-1 1/2)	3940-2 658 (700-2)	4100-3 818 (900-3)			

