

LOC I-DT <b>111.9</b>	APP CRS <b>264°</b>	Rwy Idg TDZE <b>8003</b> <b>3255</b> Apt Elev <b>3282</b>
--------------------------	------------------------	--

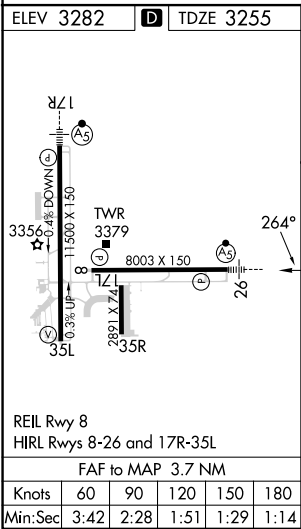
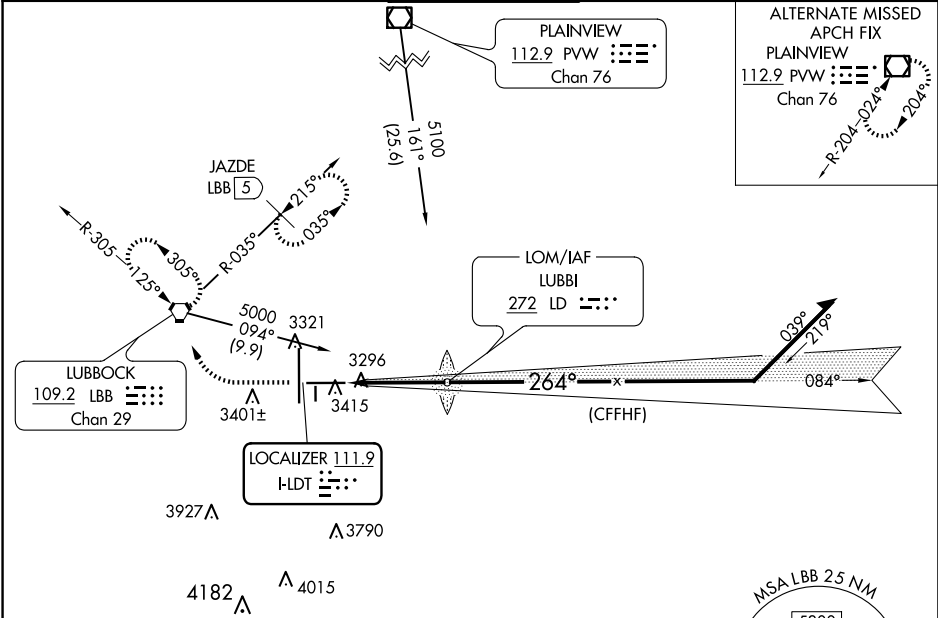
ILS or LOC RWY 26  
LUBBOCK PRESTON SMITH INTL (LBB)

**⚠** For inop MALSR, increase S-ILS 26 Cat E visibility to RVR 4000 and increase S-LOC 26 Cat C/D/E visibility to RVR 4500.  
#RVR 1800 authorized with use of FD or AP or HUD to DA.

**MALSR**

**MISSED APPROACH:** Climb to 3800 then climbing right turn to 4800 direct LBB VORTAC and hold (TACAN aircraft climb to 3800 then climbing right turn to 5100 on heading 300° and on LBB VORTAC R-035 to JAZDE/LBB 5 DME and hold northeast left turn 215° inbound).

ATIS <b>125.3 270.275</b>	LUBBOCK APP CON <b>119.2 351.8</b>	LUBBOCK TOWER <b>120.5 239.3</b>	GND CON <b>121.9 348.6</b>	CLNC DEL <b>125.8 281.55</b>
------------------------------	---------------------------------------	-------------------------------------	-------------------------------	---------------------------------



ADF OR RADAR REQUIRED					
CATEGORY A B C D E					
S-ILS 26 #3455/24 200 (200-½)					
S-LOC 26 3560/24 305 (300-½)					
Knots 60 90 120 150 180					
Min:Sec 3:42 2:28 1:51 1:29 1:14					
<b>CIRCLING</b> 3720-1 3740-1 3880-1½ 3940-2 4100-3					
438 (500-1) 458 (500-1) 598 (600-1½) 658 (700-2) 818 (900-3)					