

LUBBOCK, TEXAS

25107

LOC/DME I-LBB 111.7 Chan 54	APCH CRS 354°	Rwy Idg 11,498 TDZE 3254 Arpt Elev 3282
---	-------------------------	--

[USAF]

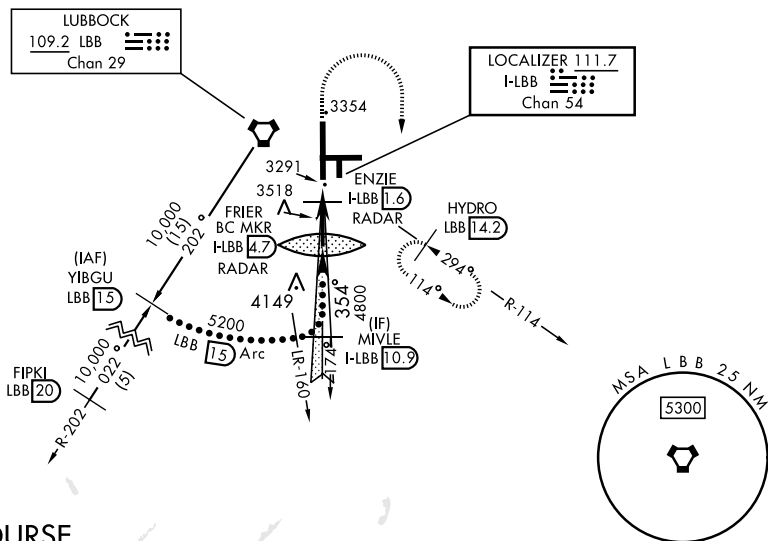
HI-LOC/DME BC RWY 35L

LUBBOCK PRESTON SMITH INTL (KLBB)

Use I-LBB DME when on Localizer course.	MISSED APPROACH: Climb to 4000, then climbing right turn to 5200 on Hdg 170° and on LBB VORTAC R-114 to HYDRO INT/LBB 14.2 DME and hold.
---	--

ATIS 125.3 270.275	APP CON 119.2 351.8	TOWER 120.5 239.3	GND CON 121.9 348.6	CLNC DEL 125.8 281.55
------------------------------	-------------------------------	-----------------------------	-------------------------------	---------------------------------

3737



BACKCOURSE

EMERG SAFE ALT 100 NM 7300

ELEV 3282 D TDZE 3254			HIRL Rwy 8-26, 17R-35L REIL Rwy 8		
<p>Diagram of the backcourse approach showing the path from 10,000 feet to 3820 feet, with various navigation aids and altitudes.</p>			<p>Diagram of the runway and taxiway layout, showing the runway (RWY 35L) and taxiway (TWY 26).</p>		
CATEGORY	C	D	E	Knots 120 150 160 180 200	
S-35L	3560-7/8	306 (300-7/8)		Min:Sec 2:06 1:41 1:35 1:24 1:16	
CIRCLING	3880-1 1/2 598 (600-1 1/2)	3940-2 658 (700-2)	4100-3 818 (900-3)	FAF to MAP 4.2 NM	

LUBBOCK, TEXAS

33° 40' N - 101° 49' W

LUBBOCK PRESTON SMITH INTL (KLBB)

Orig C 21MAY20

HI-LOC/DME BC RWY 35L