

LUBBOCK, TEXAS

LOC/DME I-LBB <b>111.7</b> Chan <b>54</b>	APCH CRS <b>174°</b>	Rwy Idg <b>11,498</b> TDZE <b>3282</b> Arpt Elev <b>3282</b>
---	-------------------------	--

[USAF]

# HI-ILS or LOC RWY 17R

LUBBOCK PRESTON SMITH INTL (KLBB)

DME or RADAR required.

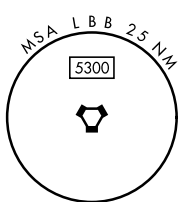
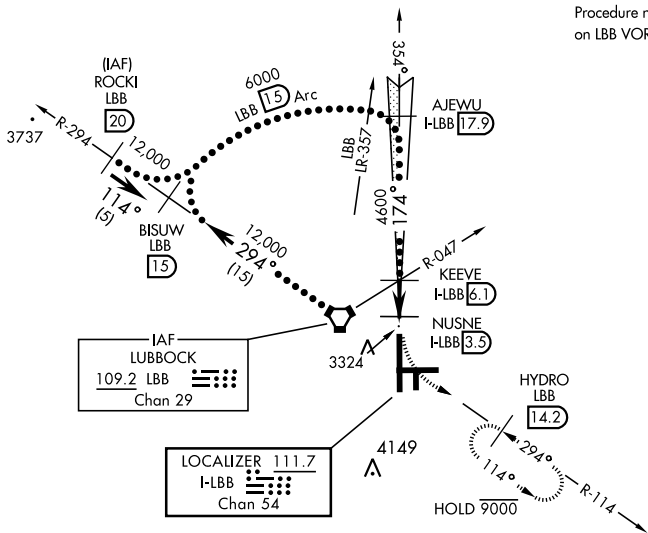
- ▼ \* When ALS inop, increase CAT E RVR to 40.  
▲ \*\* When ALS inop, increase CAT CDE vis to 1½ mile.  
▲ \*\*\* When ALS inop, increase CAT CDE RVR to 50.



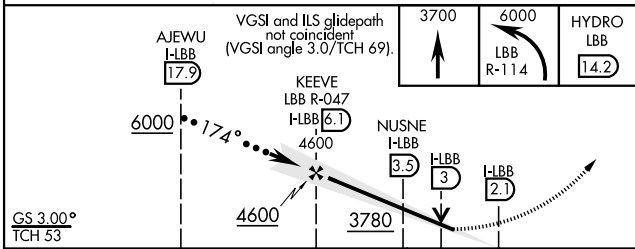
MISSED APPROACH: Climb to 3700, then climbing left turn to 6000 via LBB VORTAC R-114 to HYDRO (LBB 14.2 DME) and hold, continue climb in hold to 6000.

ATIS <b>125.3 270.275</b>	APP CON <b>119.2 351.8</b>	TOWER <b>120.5 239.3</b>	GND CON <b>121.9 348.6</b>	CLNC DEL <b>125.8 281.55</b>
------------------------------	-------------------------------	-----------------------------	-------------------------------	---------------------------------

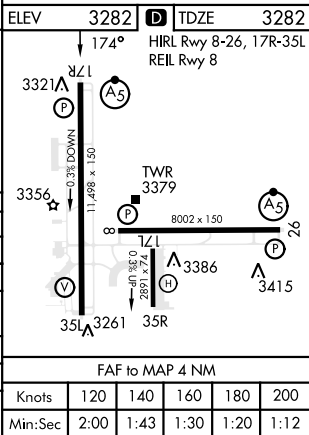
Procedure not authorized for arrivals on LBB VORTAC airways R-251 CW R-305.



EMERG SAFE ALT 100 NM 7300



CATEGORY	C	D	E
S-ILS 17R *	3482/24	200 (200-½)	
S-LOC 17R **	3780/50	498 (500-1)	
CIRCLING	3880-1½ 598 (600-1½)	3940-2 658 (700-2)	4100-3 818 (900-3)
NUSNE DME FIX MINIMUMS			
S-LOC 17R ***	3620/26	338 (400-¾)	
CIRCLING	3880-1½ 598 (600-1½)	3940-2 658 (700-2)	4100-3 818 (900-3)



LUBBOCK, TEXAS

33° 40' N - 101° 49' W

LUBBOCK PRESTON SMITH INTL (KLBB)

Amtd 2 02FEB17

# HI-ILS or LOC RWY 17R