

WAAS CH 70709 W35D	APP CRS 350°	Rwy ldg TDZE 479 Apt Elev 501
--	------------------------	---

RNAV (GPS) Y RWY 35R

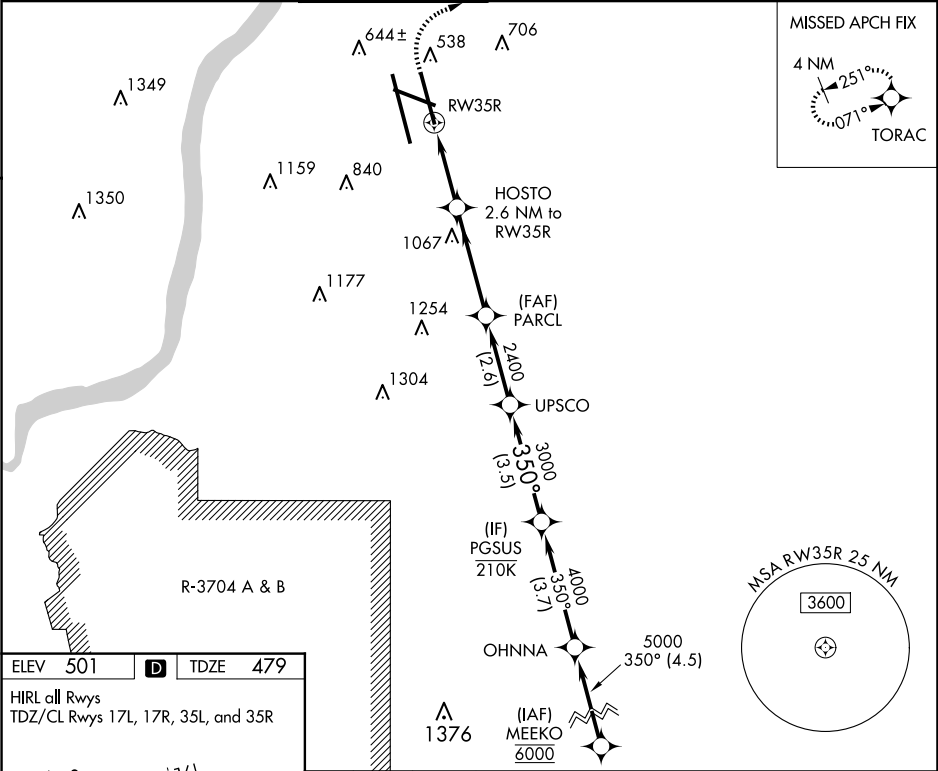
LOUISVILLE MUHAMMAD ALI INTL (SDF)

RNP APCH - GPS.

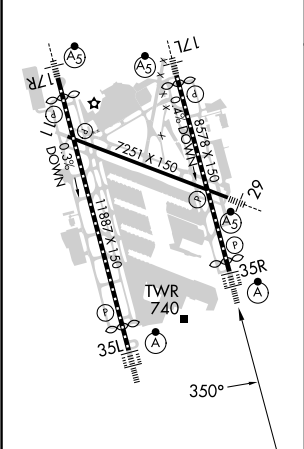
Simultaneous approach authorized. LNAV procedure NA during simultaneous operations.
Use of FD or AP required during simultaneous operations. Circling Rwy 11 NA at night.
For uncompensated Baro-VNAV systems, LNAV/VNAV NA below -13°C or above 54°C.




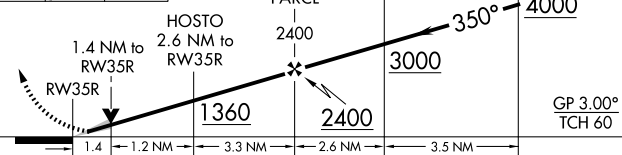

ALSF-2 MISSED APPROACH:
Climb to 1600 then climbing right turn to 4000 direct TORAC and hold.

D-ATIS 118.725	LOUISVILLE APP CON 132.075 327.0	LOUISVILLE TOWER 124.2 257.8	GND CON 121.7 348.6	CLNC DEL 126.1 275.8	CPDLC
--------------------------	--	--	-------------------------------	--------------------------------	-------



ELEV 501	D	TDZE 479
HIRL all Rwy 35L and 35R		



1600	4000	TORAC	VGSi and RNAV glidepath not coincident (VGSi Angle 3.00/TCH 71).			
						
						
CATEGORY		A		B	C	D
LPV	DA			679/18	200 (200-½)	
LNAV/ VNAV	DA			901/40	422 (400-¾)	
LNAV MDA		1000/24 521 (500-½)		1000/55 521 (500-1)		
 CIRCLING		1040-1 539 (600-1)		1140-1 639 (700-1)		
		1160-1¾ 659 (700-1¾)		1400-3 899 (900-3)		

SE-1, 07 AUG 2025 to 04 SEP 2025

SE-1, 07 AUG 2025 to 04 SEP 2025