

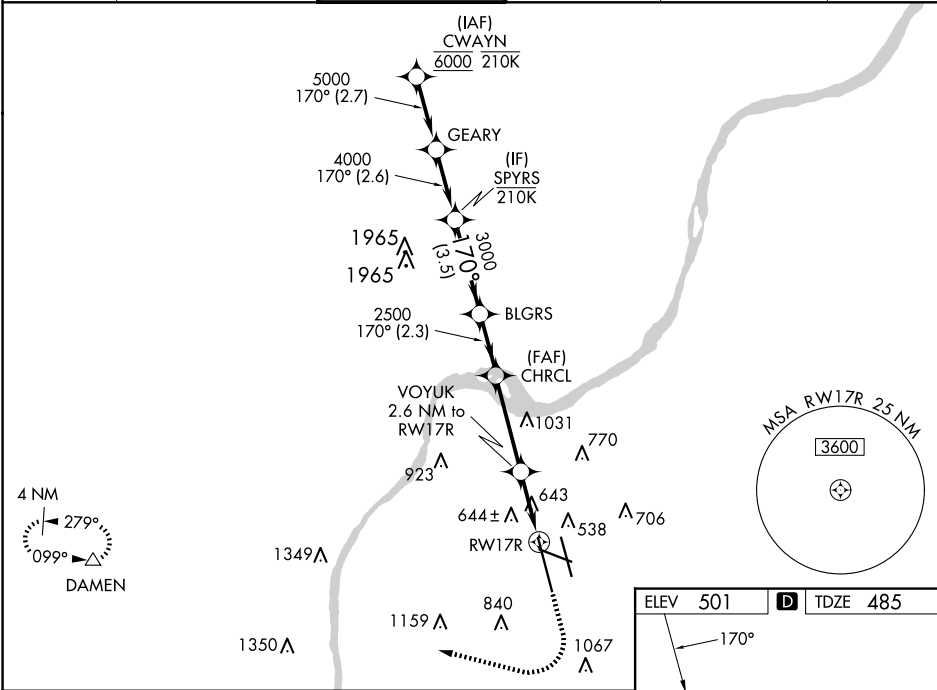
WAAS CH <b>57909</b> <b>W17A</b>	APP CRS <b>170°</b>	Rwy Idg <b>10000</b> TDZE <b>485</b> Apt Elev <b>501</b>
--	------------------------	--

RNAV (GPS) Y RWY 17R

LOUISVILLE MUHAMMAD ALI INTL (SDF')

RNP APCH - GPS.		MALSR	MISSED APPROACH: Climb to 1600 then climbing right turn to 4000 direct DAMEN and hold.
Simultaneous approach authorized. LNAV procedure NA during simultaneous operations. Use of FD or AP required during simultaneous operations. Circling Rwy 11 NA at night. For uncompensated Baro-VNAV systems, LNAV/VNAV NA below -13°C or above 34°C. For inop ALS, increase LNAV/VNAV all Cats and LNAV Cats C/D visibility to RVR 6000.			

D-ATIS <b>118.725</b>	LOUISVILLE APP CON <b>132.075 327.0</b>	LOUISVILLE TOWER <b>124.2 257.8</b>	GND CON <b>121.7 348.6</b>	CLNC DEL <b>126.1 275.8</b>	CPDLC
--------------------------	--	--	-------------------------------	--------------------------------	-------



VGSi and RNAV glidepath not coincident (VGSi Angle 3.00° TCH 64°).				
CATEGORY	A	B	C	D
LPV DA	685/18		200 (200-½)	
LNAV/VNAV DA	900/40		415 (400-¾)	
LNAV MDA	900/24	415 (400-½)	900/40	415 (400-¾)
CIRCLING	1040-1 539 (600-1)	1140-1 639 (700-1)	1160-1¾ 659 (700-1¾)	1400-3 899 (900-3)

