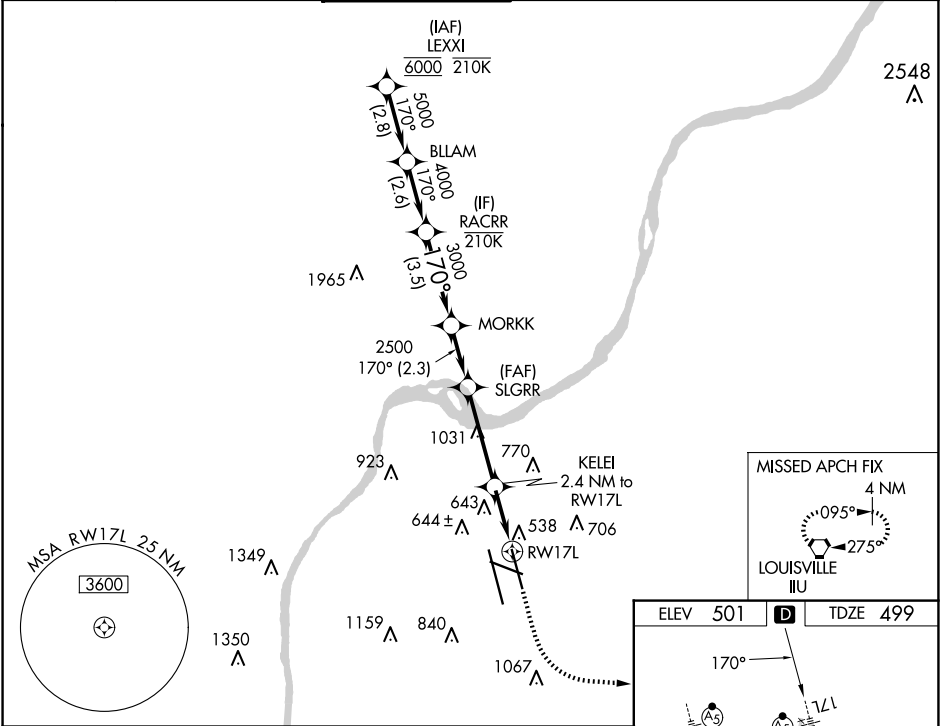


WAAS CH 90101 W17B	APP CRS 170°	Rwy Idg TDZE 499 Apt Elev 501	7800
--	------------------------	---	-------------

RNAV (GPS) Y RWY 17L
LOUISVILLE MUHAMMAD ALI INTL (SDF)

RNP APCH - GPS. Simultaneous approach authorized. Circling Rwy 11 NA at night. For uncompensated Baro-VNAV systems, LNAV/VNAV NA below -13°C or above 54°C. LNAV procedure NA during simultaneous operations. Use of FD or AP required during simultaneous operations. For inop ALS, increase LNAV/VNAV all Cats visibility to RVR 6000.	MALSR 	MISSED APPROACH: Climb to 1000 then climbing left turn to 3000 direct IIU VORTAC and hold, continue climb-in-hold to 3000.
---	-----------	--

D-ATIS 118.725	LOUISVILLE APP CON 132.075 327.0	LOUISVILLE TOWER 124.2 257.8	GND CON 121.7 348.6	CLNC DEL 126.1 275.8	CPDLC
--------------------------	--	--	-------------------------------	--------------------------------	-------



VGSI and RNAV glidepath not coincident (VGSI Angle 3.32/TCH 71).				
GP 3.00° TCH 55				
RACRR MORKK SLGRR KELEI RWY 17L				
4000 170° 3000 2500 1320 1000 3000 IIU				
3.5 NM 2.3 NM 3.7 NM 1.4 NM 1 NM				
CATEGORY	A	B	C	D
LPV DA	699/18		200 (200-½)	
LNAV/VNAV DA	909/40		410 (500-¾)	
LNAV MDA	920/24	421 (500-½)	920/40	421 (500-¾)
CIRCLING	1040-1 539 (600-1)	1140-1 639 (700-1)	1160-1¾ 659 (700-1¾)	1400-3 899 (900-3)

