

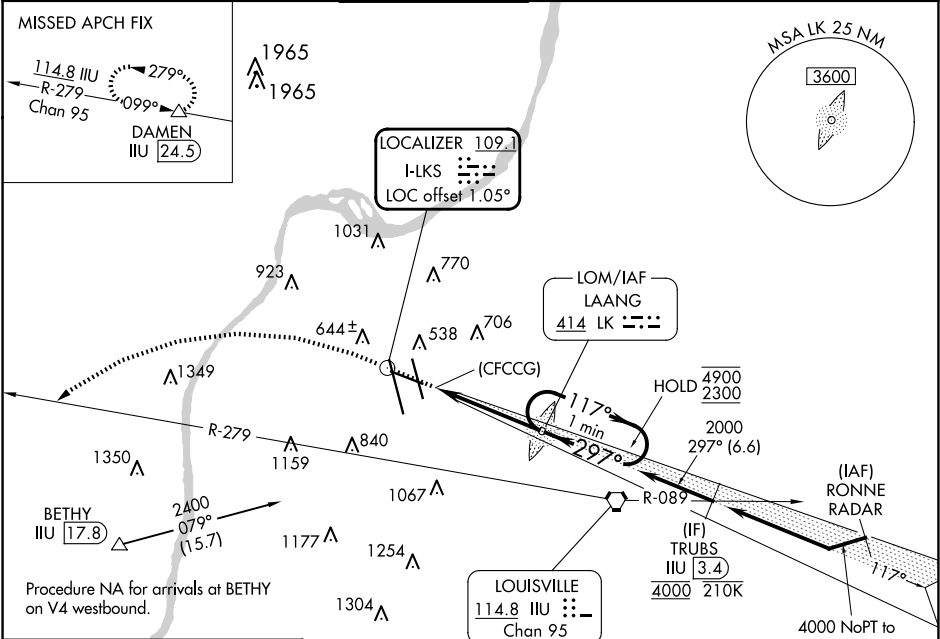
LOC I-LKS <b>109.1</b>	APP CRS <b>297°</b>	Rwy Idg <b>7250</b> TDZE <b>480</b> Apt Elev <b>501</b>
---------------------------	------------------------	---

LOC RWY 29

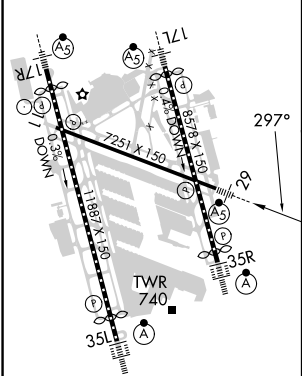
LOUISVILLE MUHAMMAD ALI INTL (SDF')

RADAR required. ADF or DME required.		MALSR 	MISSED APPROACH: Climb to 1100 then climbing left turn to 4000 heading 268° and on IIU VORTAC R-279 to DAMEN and hold.
Circling Rwy 11 NA at night. Rwy 29 helicopter visibility reduction below RVR 4000 NA. For inop ALS, increase S-29 visibility Cats A/B to RVR 5500 and Cats C/D to 1½ SM.			

D-ATIS <b>118.725</b>	LOUISVILLE APP CON <b>132.075 327.0</b>	LOUISVILLE TOWER <b>124.2 257.8</b>	GND CON <b>121.7 348.6</b>	CLNC DEL <b>126.1 275.8</b>	CPDLC
--------------------------	--	--	-------------------------------	--------------------------------	-------



ELEV 501	D	TDZE 480
----------	---	----------



HIRL all Rwy TDZ/CL Rwy 17L, 17R, 35L, and 35R					
FAF to MAP 4.1 NM					
Knots	60	90	120	150	180
Min:Sec	4:06	2:44	2:03	1:38	1:22

<div>TRUBS 252° (1.2) and 297° (4.7)</div>				
<div>R-3704 A &amp; B</div>				
<div>1100 ↑</div>	<div>4000 hdg 268°</div>	<div>IIU R-279</div>	<div>DAMEN △</div>	<div>VGSI and descent angles not coincident (VGSI Angle 3.00/TCH 56).</div>
			<div>LAANG LK LOM</div>	<div>One Minute Holding Pattern</div>
<div>(CFCCG)</div>			<div>117° → 4900 ← 297° 2300</div>	
<div>0.5</div>			<div>297° 3.00° TCH 56</div>	<div>2000</div>
<div>4.1 NM</div>				
CATEGORY	A	B	C	D
S-29	1060/40	580 (600-¾)	1060-1¼	580 (600-1¼)
CIRCLING	1060-1 559 (600-1)	1140-1 639 (700-1)	1160-1¾ 659 (700-1¾)	1400-3 899 (900-3)