

LOUISVILLE, KENTUCKY

AL-239 (FAA)

25051

| | | |
|---|------------------------|---|
| LOC/DME I-JJM <u>110.55</u> Chan 42 (Y) | APP CRS 350° | Rwy Idg 7800 TDZE 479 Apt Elev 501 |
|---|------------------------|---|

ILS or LOC RWY 35R
LOUISVILLE MUHAMMAD ALI INTL (SDF)

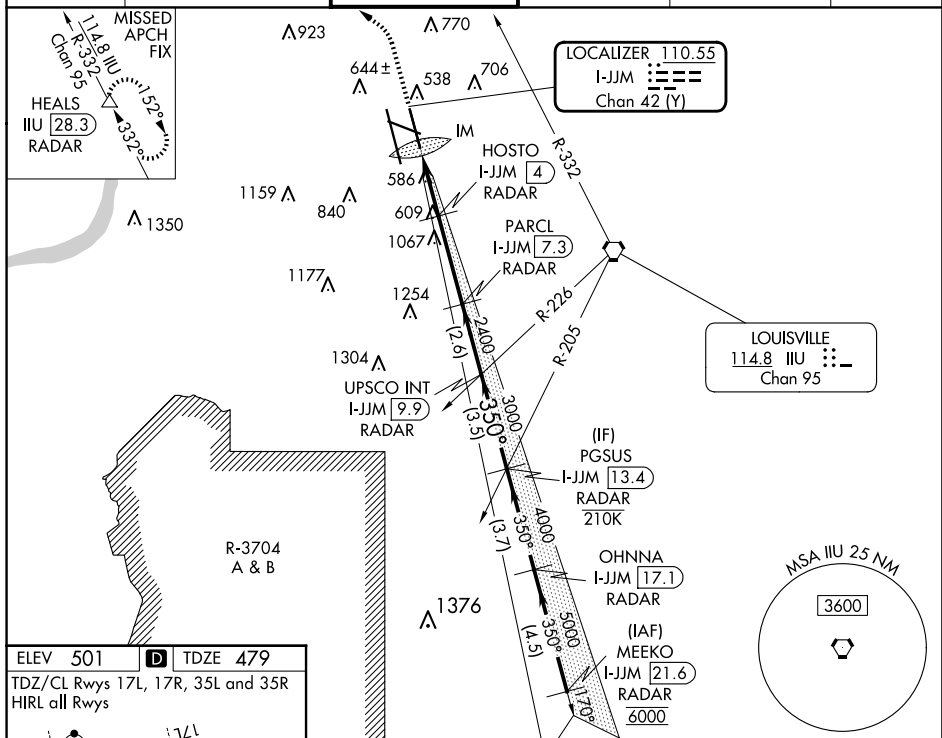
DME or RADAR required for LOC only.

T Simultaneous approach authorized. Circling Rwy 11 NA at night.
A For inop ALS, increase LOC Cat C/D to 5000 RVR.

ALSF-2

MISSED APPROACH: Climb to 2500 then climbing left turn to 4000 on heading 350° and on IIIU VORTAC R-332 to HEALS/28.3 DME/RADAR and hold.

| | | | | | |
|-------------------|-------------------------------------|---------------------------------|------------------------|-------------------------|-------|
| D-ATIS 118.725 | LOUISVILLE APP CON 132.075 327.0 | LOUISVILLE TOWER 124.2 257.8 | GND CON 121.7 348.6 | CLNC DEL 126.1 275.8 | CPDLC |
|-------------------|-------------------------------------|---------------------------------|------------------------|-------------------------|-------|



Plan view of the ILS and VGS glidepaths. The ILS glidepath is 3.00° TCH 60. The VGS glidepath is 3.00° TCH 60. The vertical separation is 13.4 feet. The ILS glidepath is 3.00° TCH 60. The VGS glidepath is 3.00° TCH 60.

Profile view of the ILS and VGS glidepaths. The ILS glidepath is 3.00° TCH 60. The VGS glidepath is 3.00° TCH 60. The vertical separation is 13.4 feet. The ILS glidepath is 3.00° TCH 60. The VGS glidepath is 3.00° TCH 60.

| FAF to MAP 5.9 NM | | | | | |
|-------------------|------|------|------|------|------|
| Knots | 60 | 90 | 120 | 150 | 180 |
| Min:Sec | 5:54 | 3:56 | 2:57 | 2:22 | 1:58 |

| CATEGORY | A | B | C | D |
|-----------|-----------------------|-----------------------|-------------------------|-----------------------|
| S-ILS 35R | 679/18 200 (200-½) | | | |
| S-LOC 35R | 840/24 | 361 (400-½) | 840/35 | 361 (400-¾) |
| CIRCLING | 1040-1 539 (600-1) | 1140-1 639 (700-1) | 1160-1½ 659 (700-1½) | 1400-3 899 (900-3) |

LOUISVILLE, KENTUCKY
Amdt 6 11JUL24

LOUISVILLE MUHAMMAD ALI INTL (SDF)
ILS or LOC RWY 35R

38°10'N-85°44'W

SE-1, 07 AUG 2025 to 04 SEP 2025

SE-1, 07 AUG 2025 to 04 SEP 2025