

LOC/DME I-PKI 111.95 Chan 56 (Y)	APP CRS 170°	Rwy Idg TDZE 499 Apt Elev 501
--	------------------------	---

ILS or LOC RWY 17L

LOUISVILLE MUHAMMAD ALI INTL (SDF)

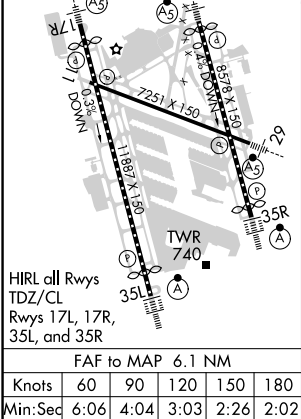
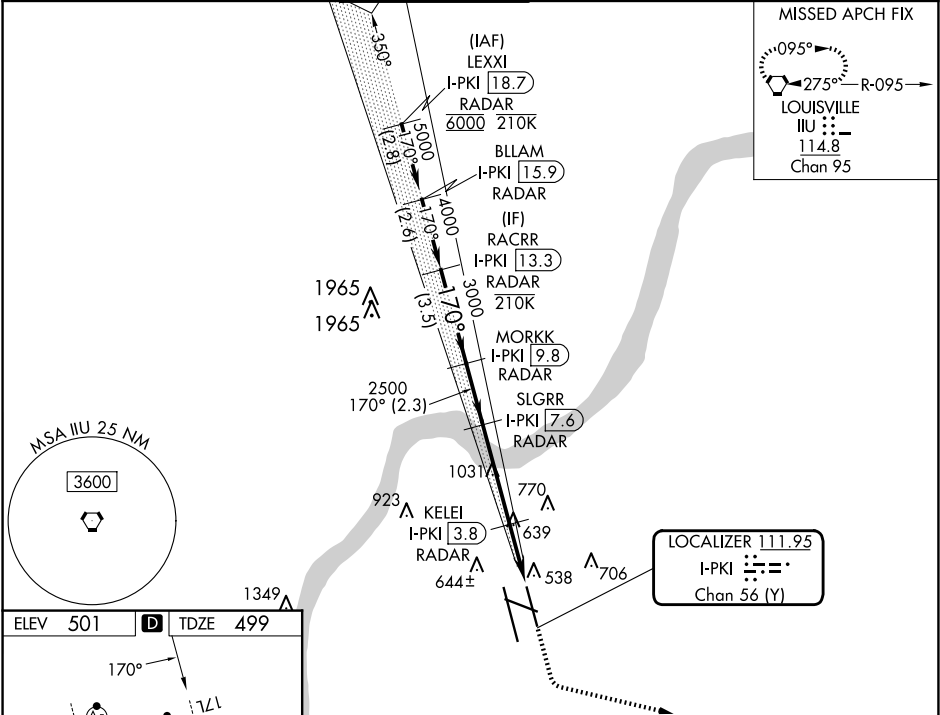
DME or RADAR required. RADAR required for procedure entry.

Simultaneous approach authorized. Circling Rwy 11 NA at night.
For inop ALS, increase S-LOC 17L Cat C/D visibility to 1½ SM.

MALSR

MISSED APPROACH: Climb to 1000 then climbing left turn to 3000 direct IIU VORTAC, continue climb-in-hold to 3000.

D-ATIS 118.725	LOUISVILLE APP CON 132.075 327.0	LOUISVILLE TOWER 124.2 257.8	GND CON 121.7 348.6	CLNC DEL 126.1 275.8	CPDLC
--------------------------	--	--	-------------------------------	--------------------------------	-------



RACRR I-PKI 13.3 RADAR		VGSi and ILS glidepath not coincident (VGSi Angle 3.00/TCH 63).		1000	3000	IIU
MORKK I-PKI 9.8 RADAR		SLGRR I-PKI 7.6 RADAR				
KELEI I-PKI 3.8 RADAR		I-PKI 2.7		I-PKI 1.4		
CATEGORY A		B		C		
S-ILS 17L		699/18		200 (200-½)		
S-LOC 17L		1000/24		501 (500-½)		
1040-1		1140-1		1160-1¾		
539 (600-1)		639 (700-1)		659 (700-1¾)		
1400-3		899 (900-3)				