

SE-1, 07 AUG 2025 to 04 SEP 2025

TOP ALTITUDE:
13000

RNAV - DME/DME/IRU or GPS.

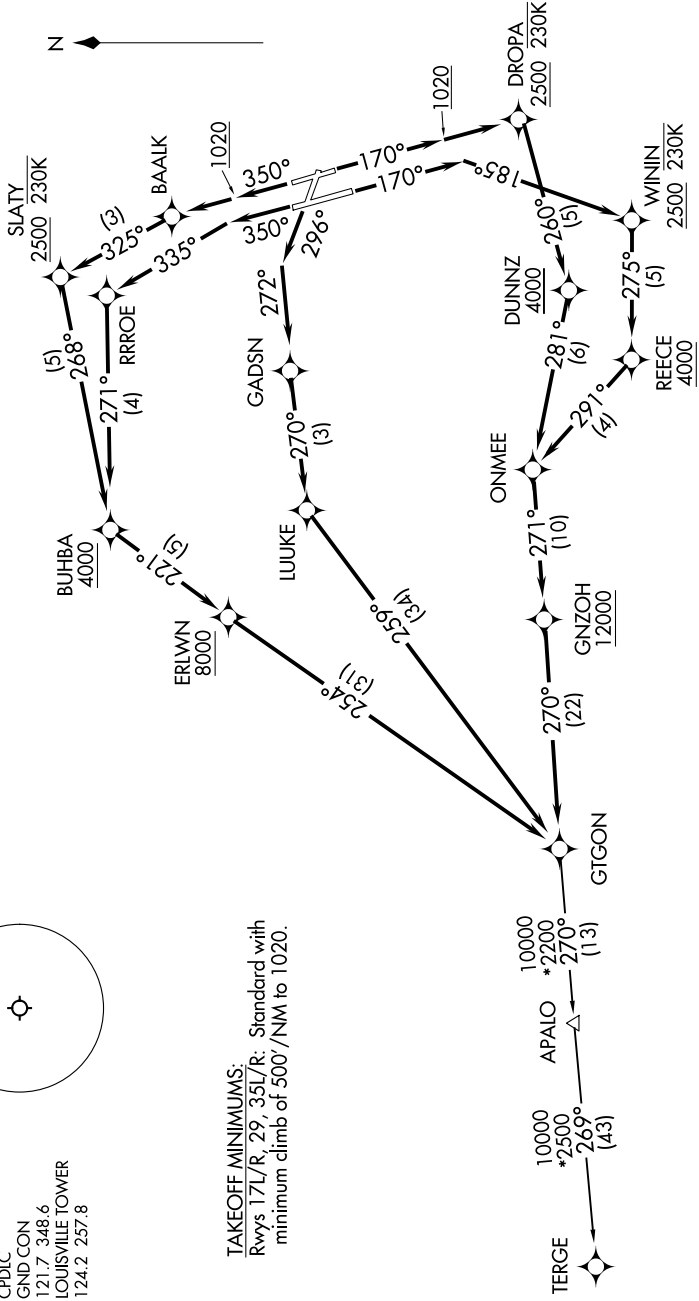
RADAR required for non-GPS equipped aircraft.

LOUISVILLE DEP CON
132.075 327.0
D-ATIS 118.725
CLNC DEL
126.1 275.8
CPDLC
GND CON
121.7 348.6
LOUISVILLE TOWER
124.2 257.8

NSA SDF 2.5 NM

3600

TAKEOFF MINIMUMS:
Rwys 17L/R, 29, 35L/R: Standard with
minimum climb of 500'/NM to 1020.



(CONTINUED ON FOLLOWING PAGE)

SE-1, 07 AUG 2025 to 04 SEP 2025